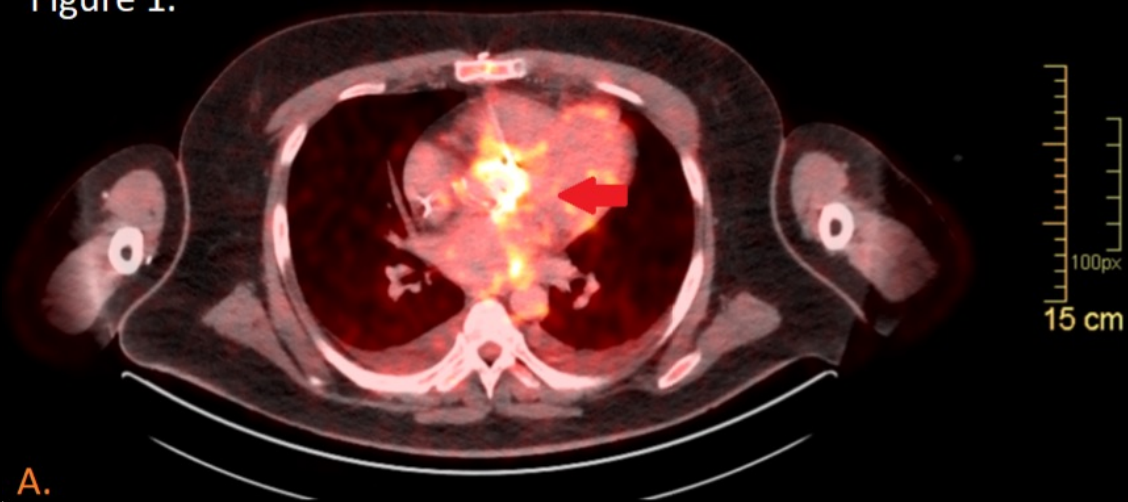
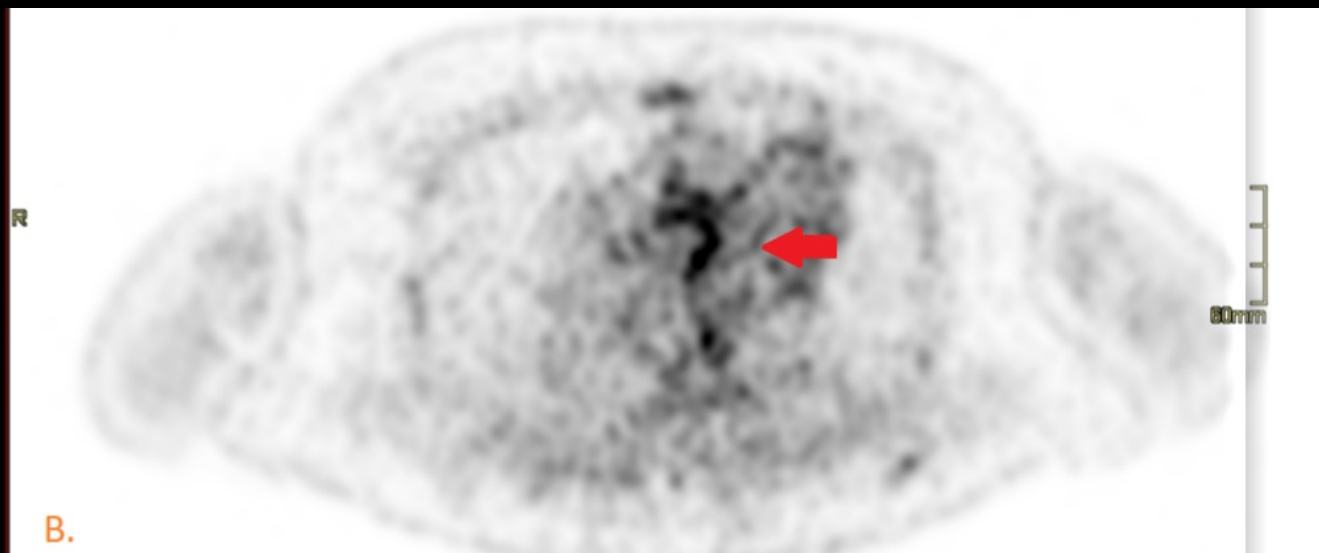


Figure 1.

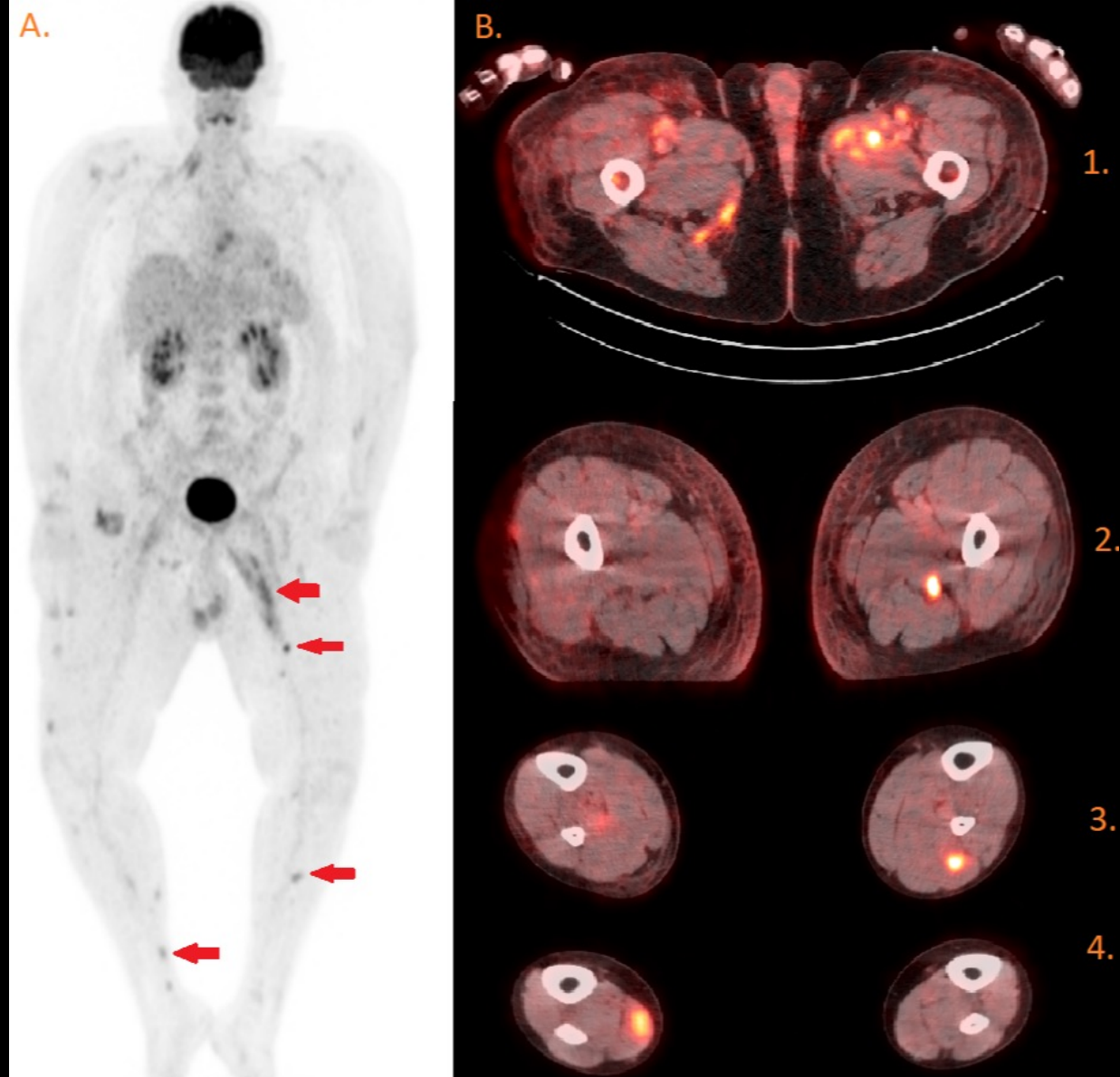


A.



B.

A. PET fusion: increased metabolic activity is observed in the prosthetic aortic valve (red arrow) and left atrium. B. MIP PET: it is confirmed that the increased activity is in the prosthetic aortic valve with SUVmax of 6,0.



**Figure 2.**

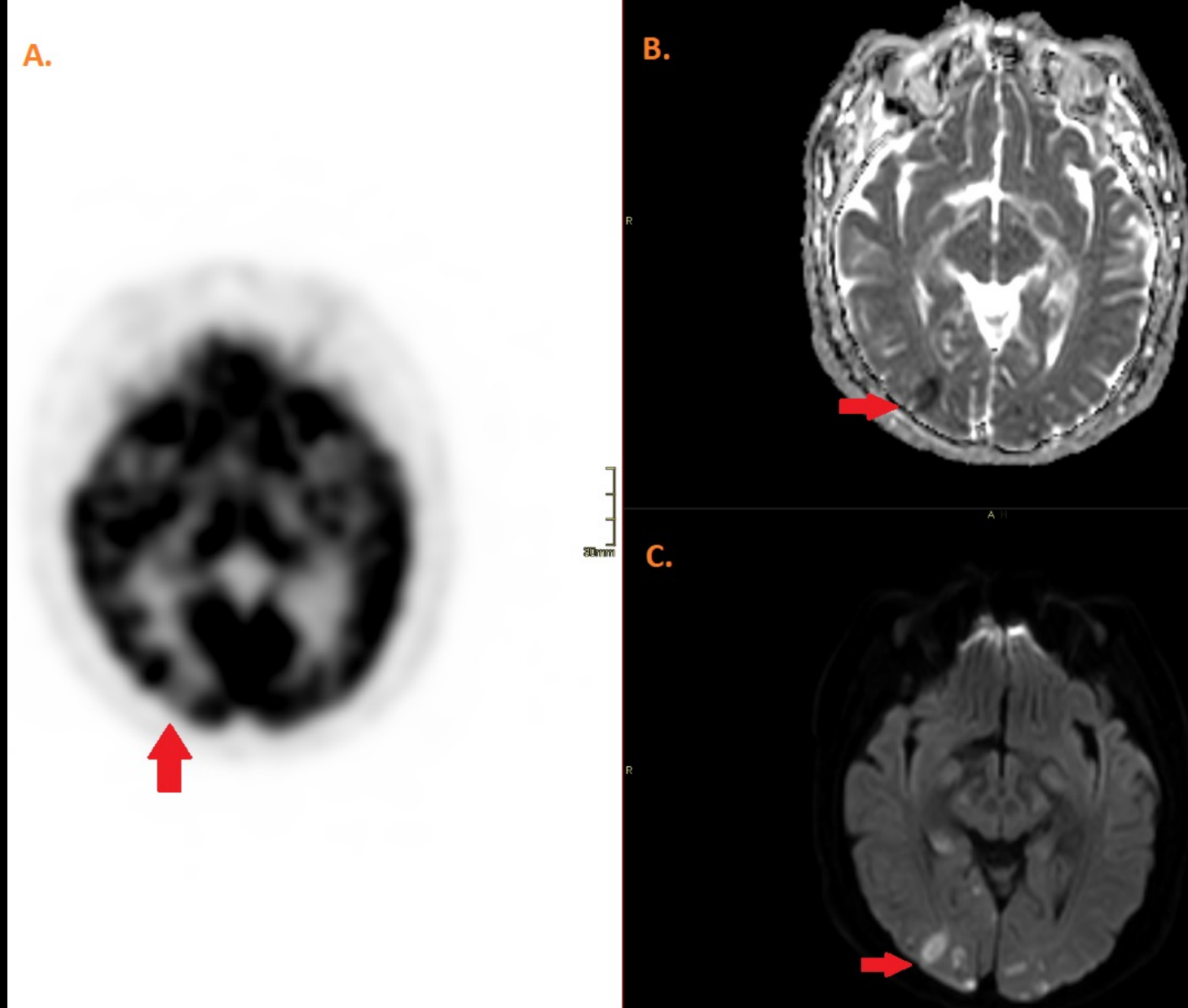
**A. Full body PET.** multiple hyperenhancement lesions in both lower extremities (red arrows).

**B. PET fusion. B1.** Hyperuptake lesions in the thickness of the left iliopsoas and pectineus muscles.

**B2.** Hyperuptake lesion adjacent to the left adductor magnus muscle.

**B3.** Hyperuptake lesion adjacent to the left peroneal muscles.

**B4.** Hyperuptake lesion in the thickness of the right sural tendon.

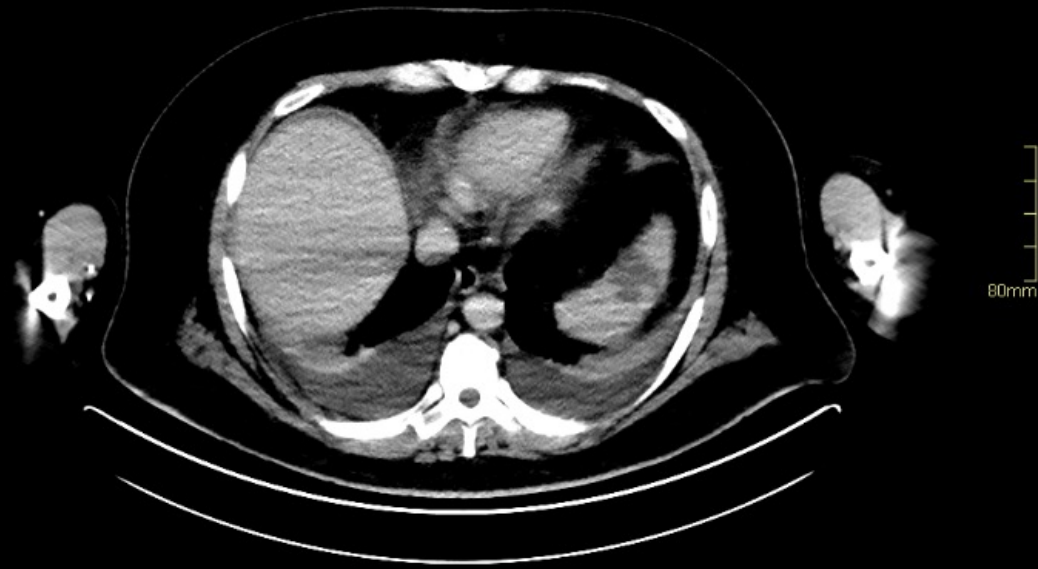


**Figure 3.**

**A. Brain PET.** Interruption of metabolic activity in the cortico-subcortical region of the right parieto-occipital region (red arrow). **B. ADC.** Restricted diffusion of right parieto-occipital lesion. **C. DWI.** Increased signal intensity in cortico-subcortical lesion of the right parieto-occipital region.

Figure 4.

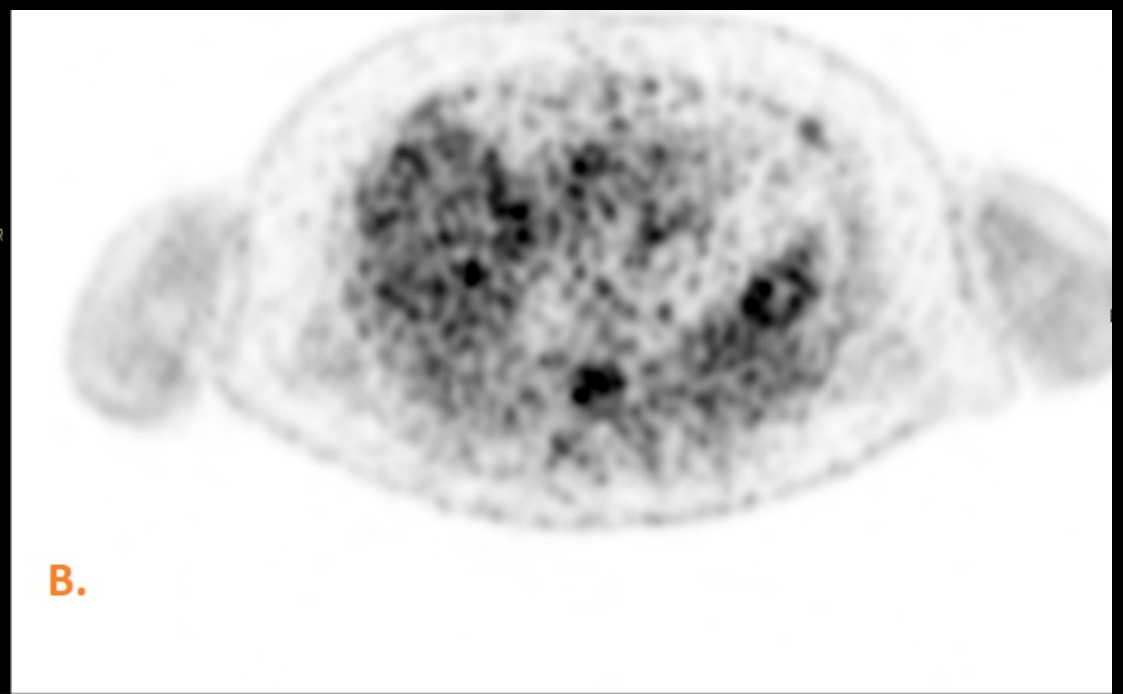
A.



A. Abdominal CT. spleen with hypodense area and well-defined margins at the upper pole. B and C. PET CT: spleen with wedge-shaped hypodense focus surrounded by hypermetabolic area with SUVmax: 6.0.

R

B.



C.

