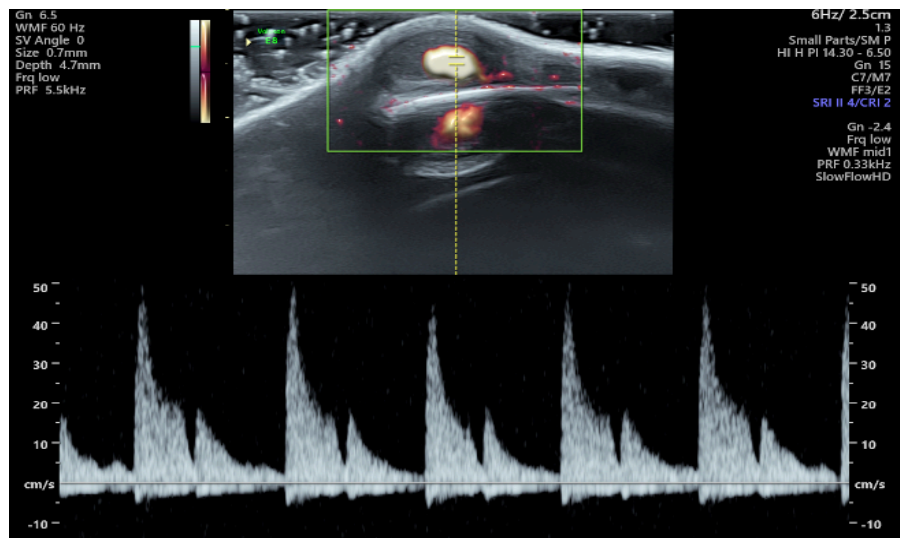
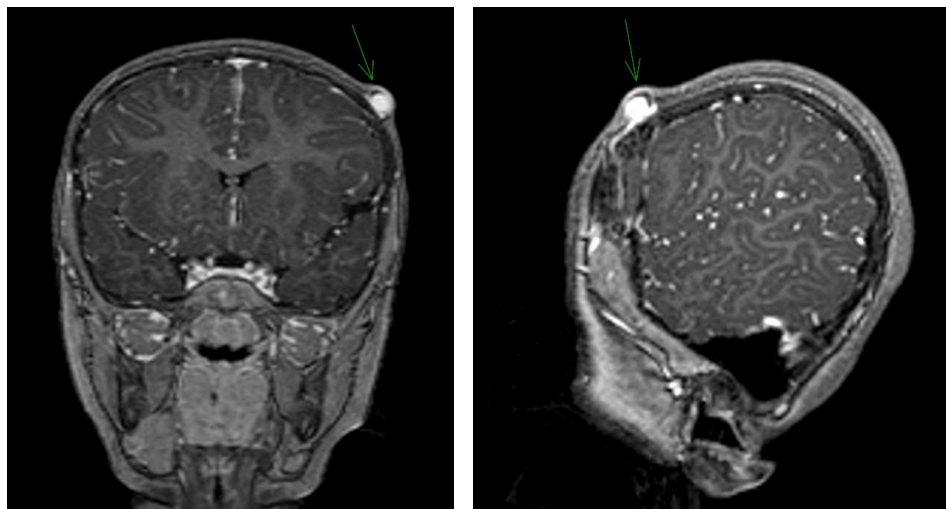


Ultrasound with Power Doppler and Color Doppler of a nodular subgaleal image in the left parietal region, demonstrating central vascularity



Pulsed Doppler ultrasound of a nodular subgaleal image in the left parietal region reveals moderate-resistance arterial flow



Coronal and sagittal MRI T1 fat-saturated post-gadolinium sequences reveal a nodular subgaleal image in the left parietal region, exhibiting intense enhancement following contrast administration