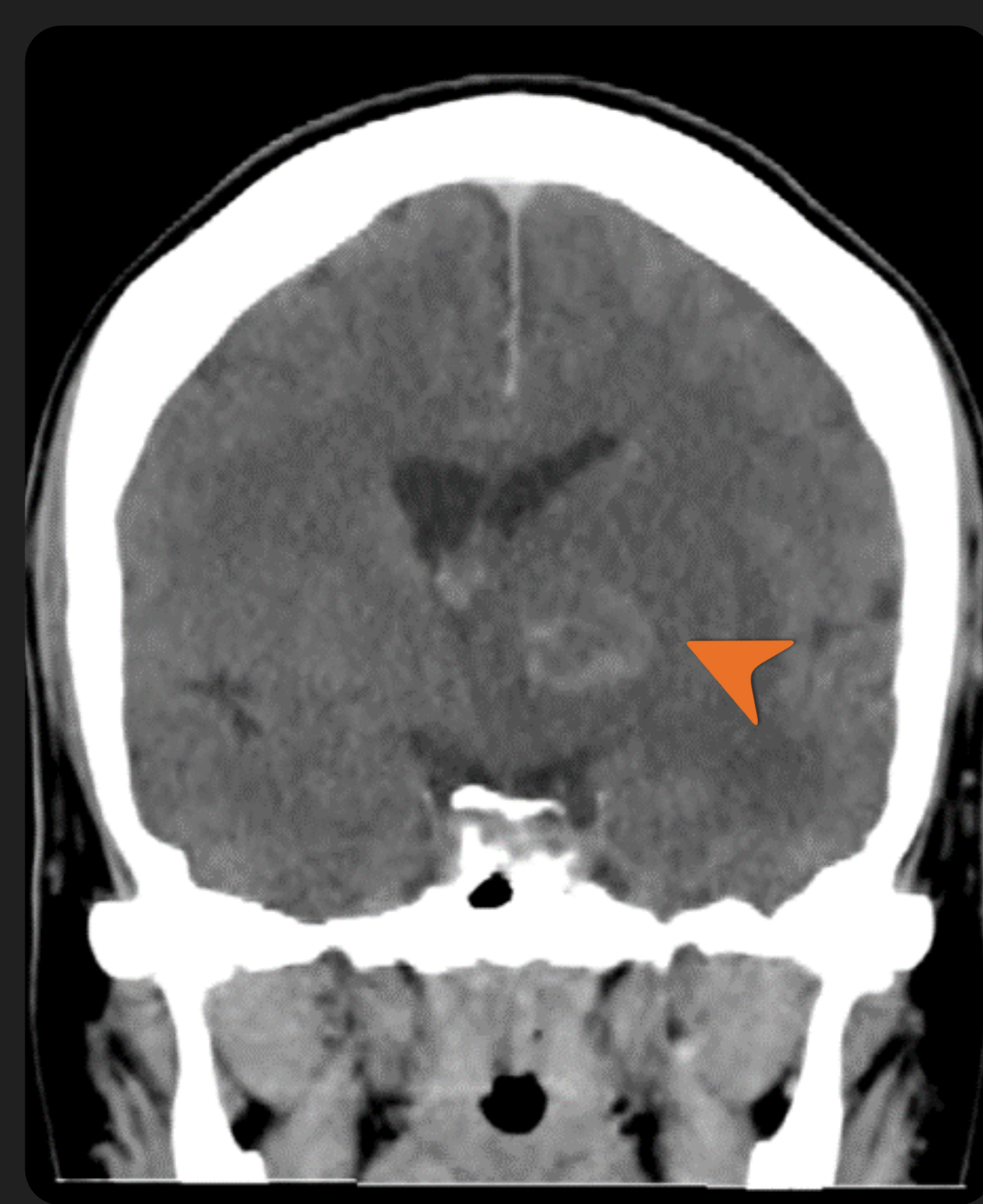
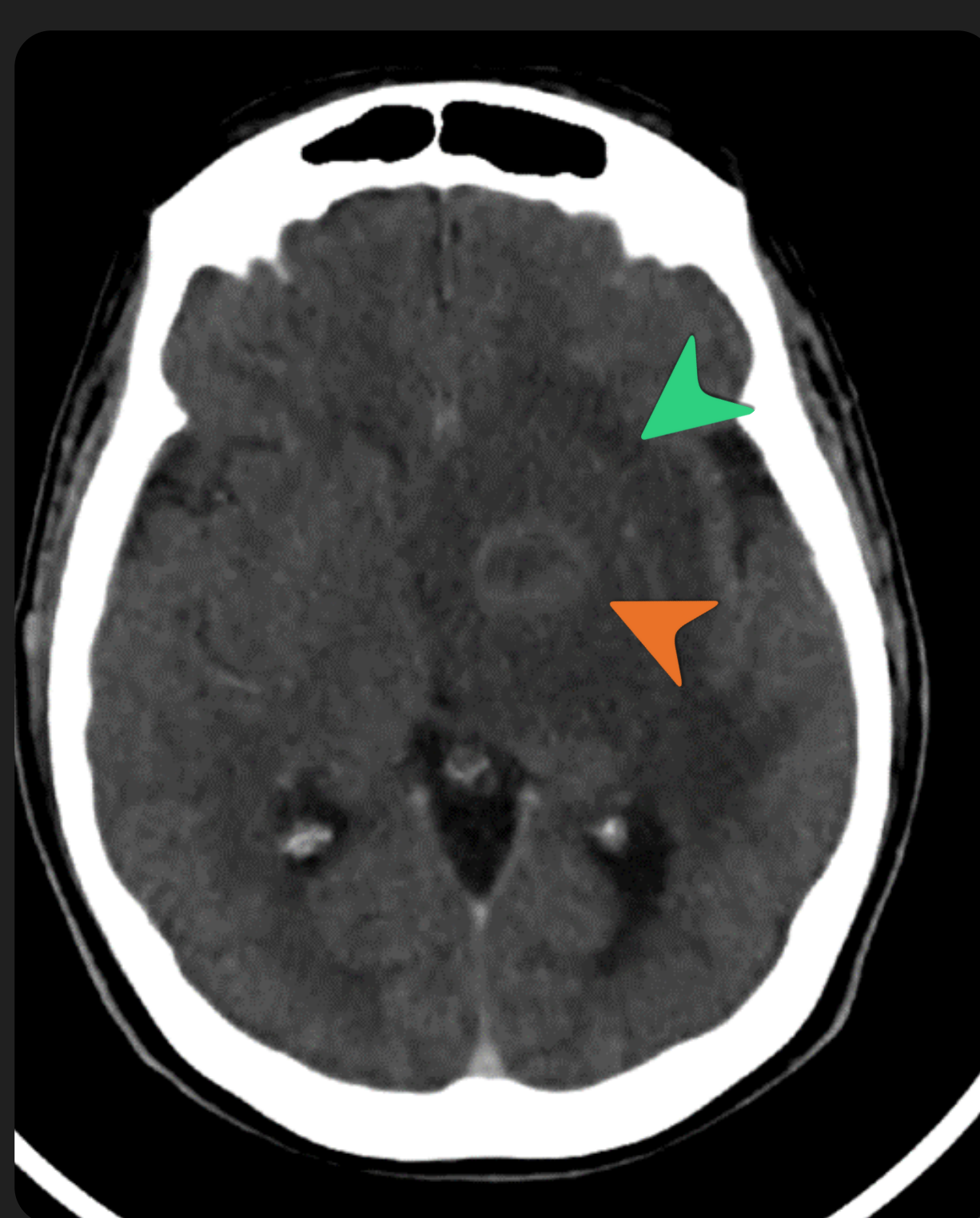
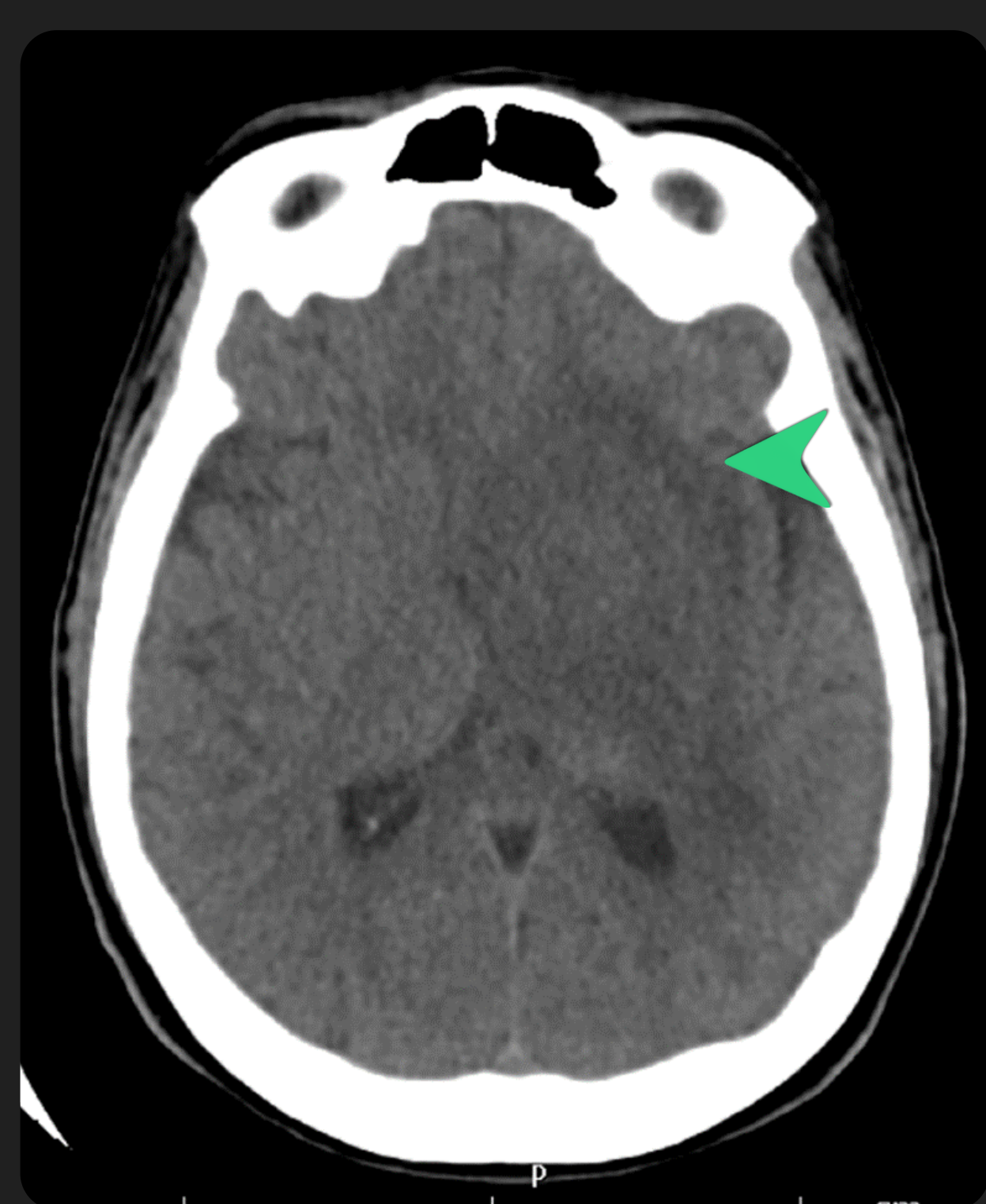


" PROGRESSIVE MULTIFOCAL LEUKOENCEPHALOPATHY

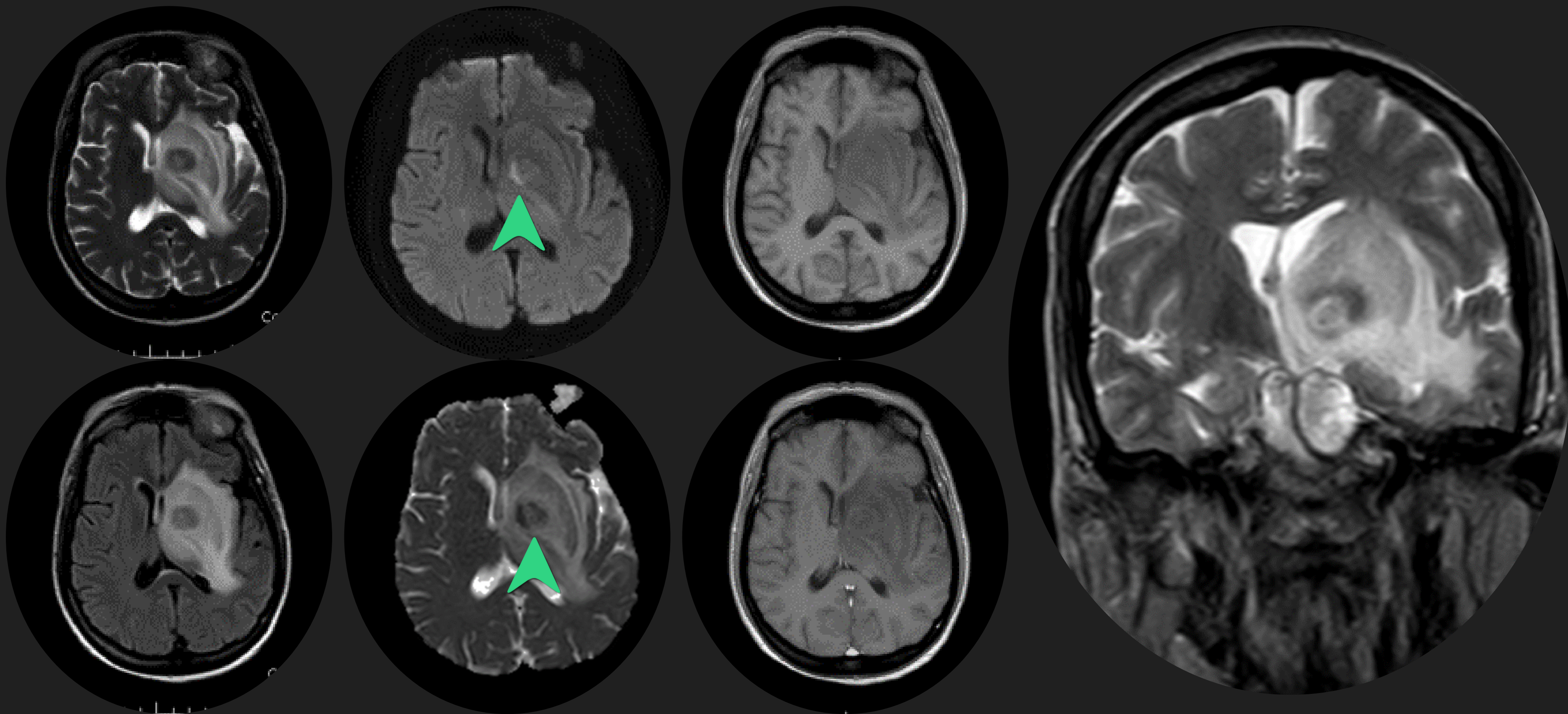
A HIDDEN AND QUICKLY DEADLY ENTITY"

ID: 518

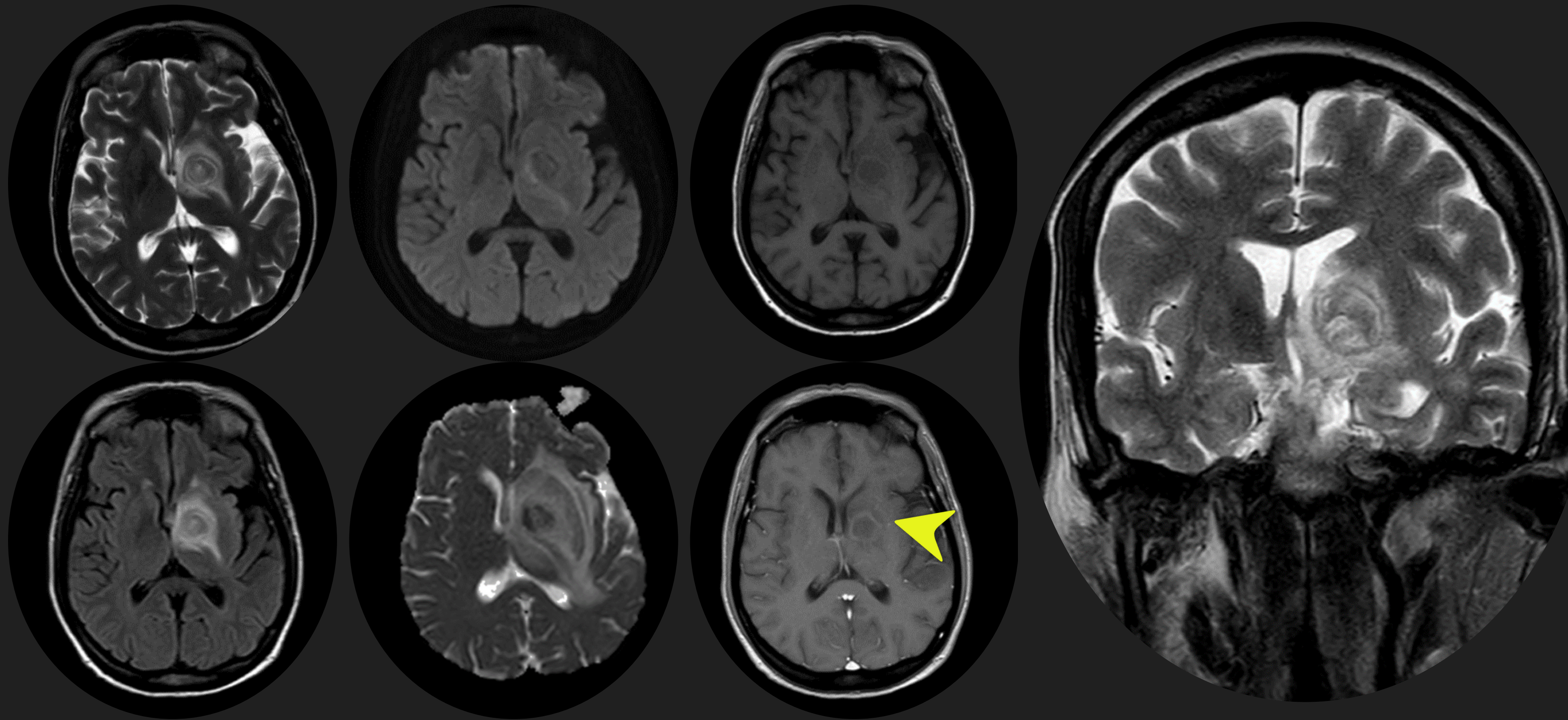
Case Report



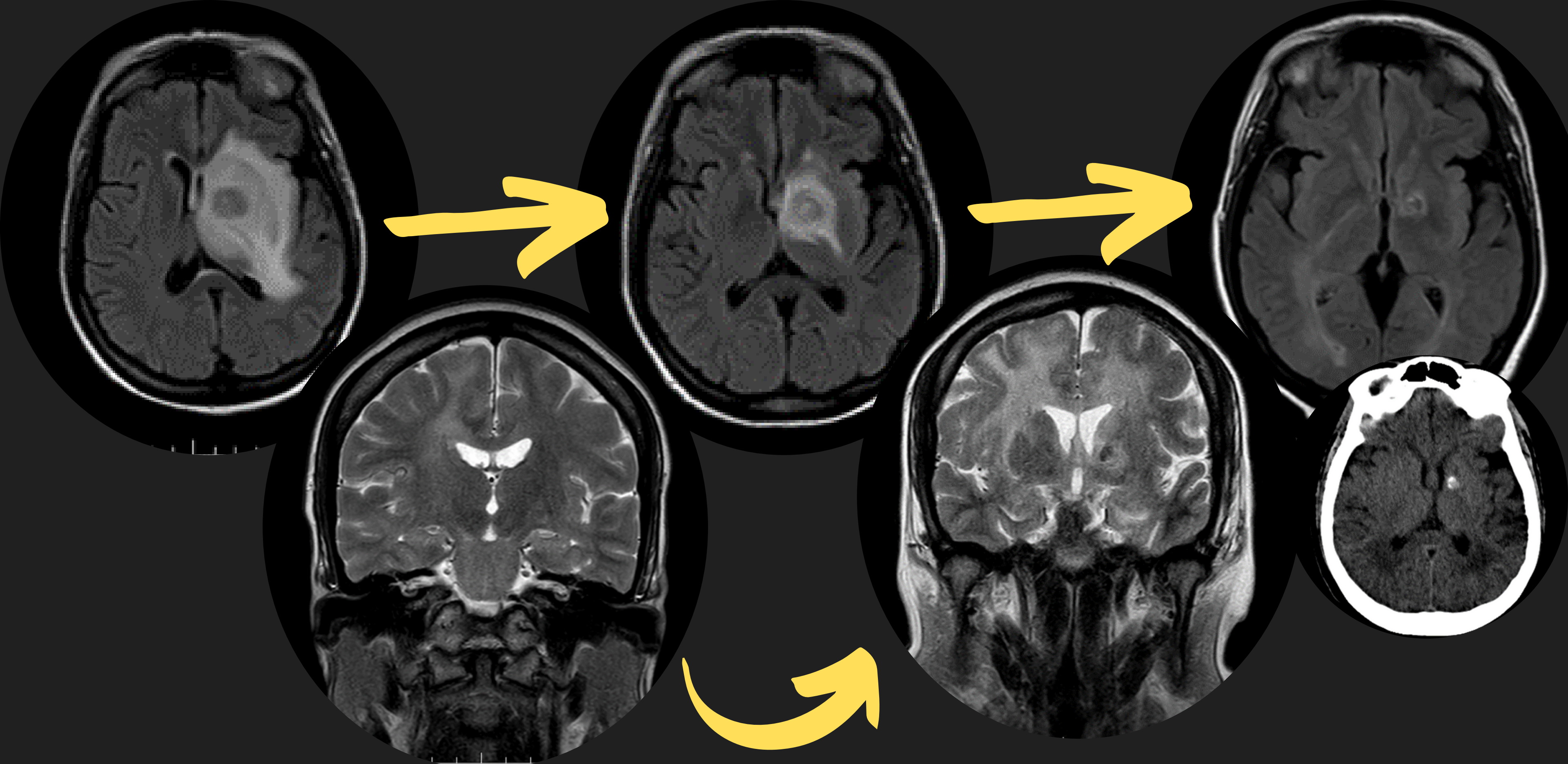
44-year-old woman with a history of HIV. Brain CT without and with contrast showed **left basal ganglia nodular lesion**, with post-contrast ring enhancement and **extensive adjacent vasogenic edema**. Lymphoma vs. Toxoplasmosis



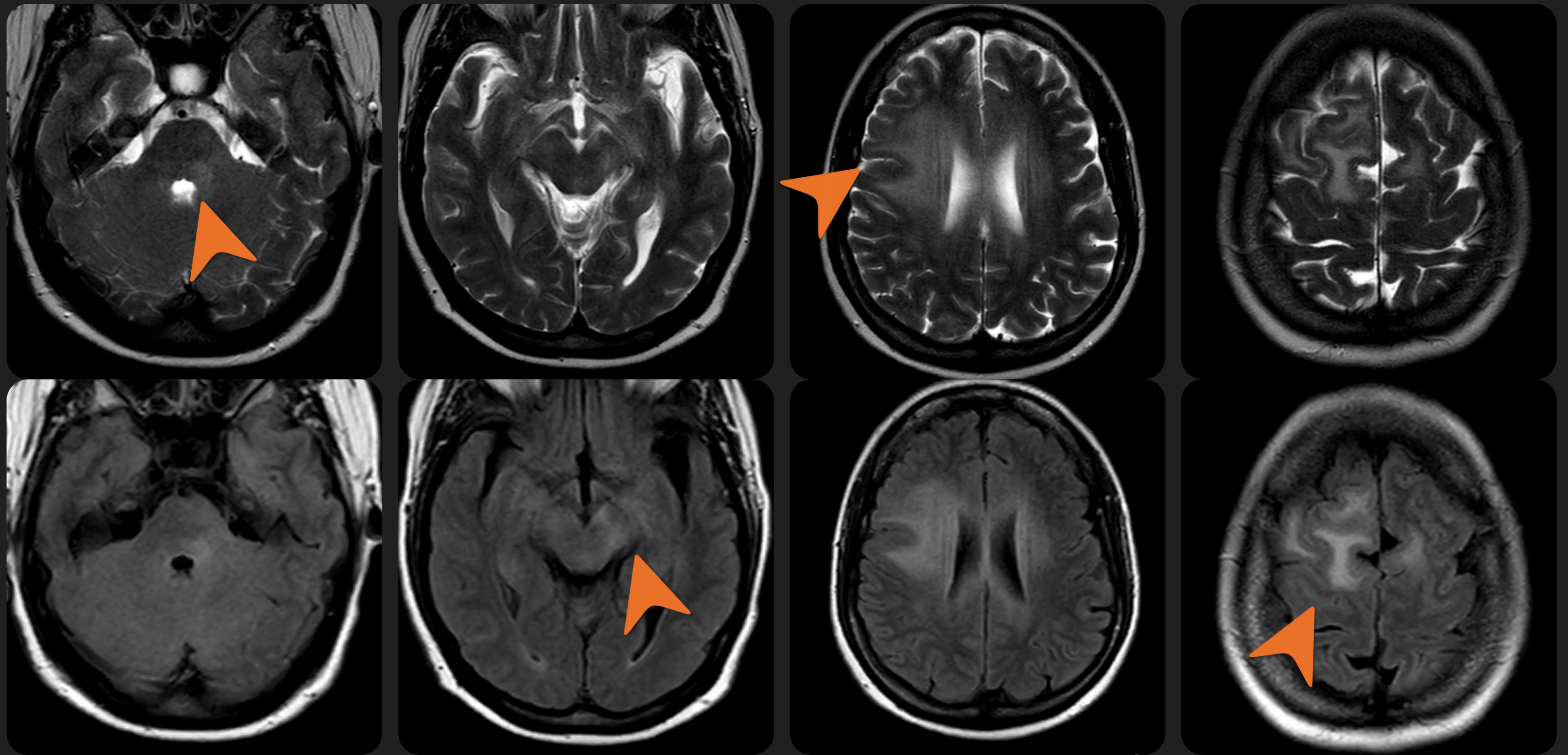
44-year-old woman with a history of HIV. Brain MRI without and with contrast showed left basal ganglia lesion, with post-contrast ring enhancement, **peripheral restriction on DWI** and extensive adjacent vasogenic edema.



The control image showed reduced vasogenic edema, less restriction on DWI but greater **post-contrast annular enhancement**.



LMP: Reduction of vasogenic edema of the basal ganglia lesion and **increase of the pathological signal in brain white matter**



LMP: MRI in T2 and FLAIR sequences shows **hyperintensity that asymmetrically** involves the frontal, temporal, and insular regions with involvement of the white matter that reaches the subcortical U fibers bilaterally. There are also areas with similar signal involving the brainstem and both cerebellar hemispheres, with greater involvement of the left side