

FINDINGS IN CT

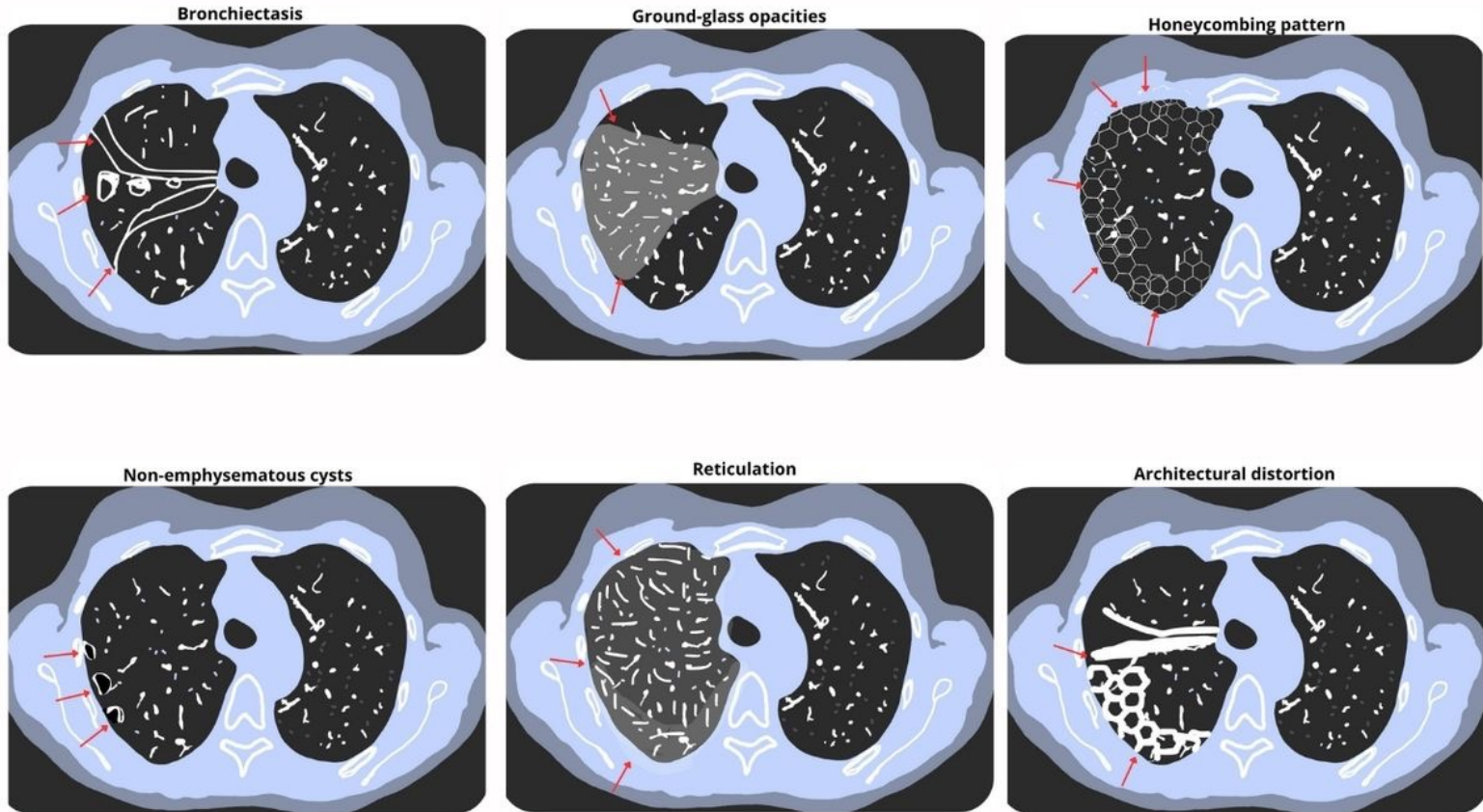


Figure 1. ILA patterns

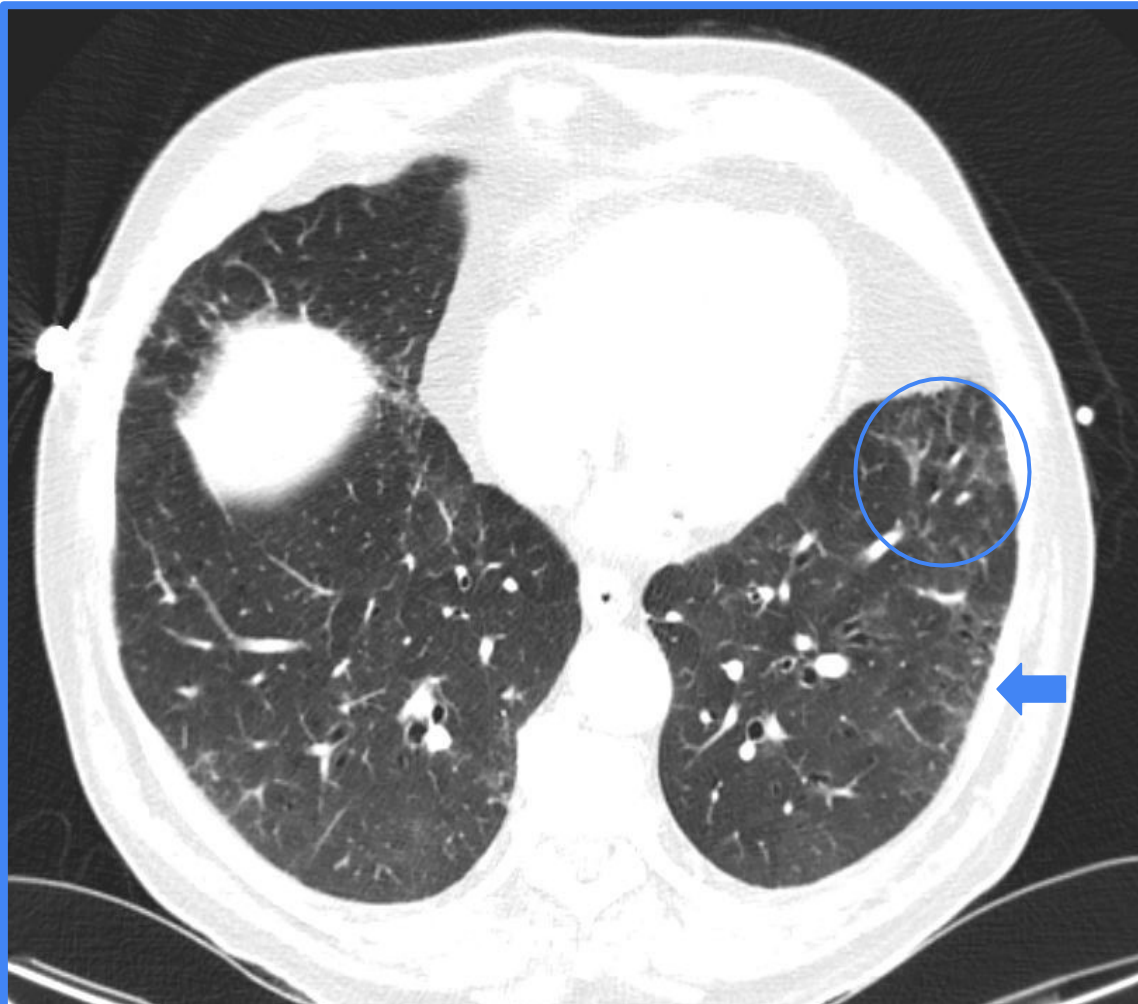


Figure 2. A representative axial CT image showing bilateral subpleural ground-glass abnormality(arrow) and reticulations (circle)

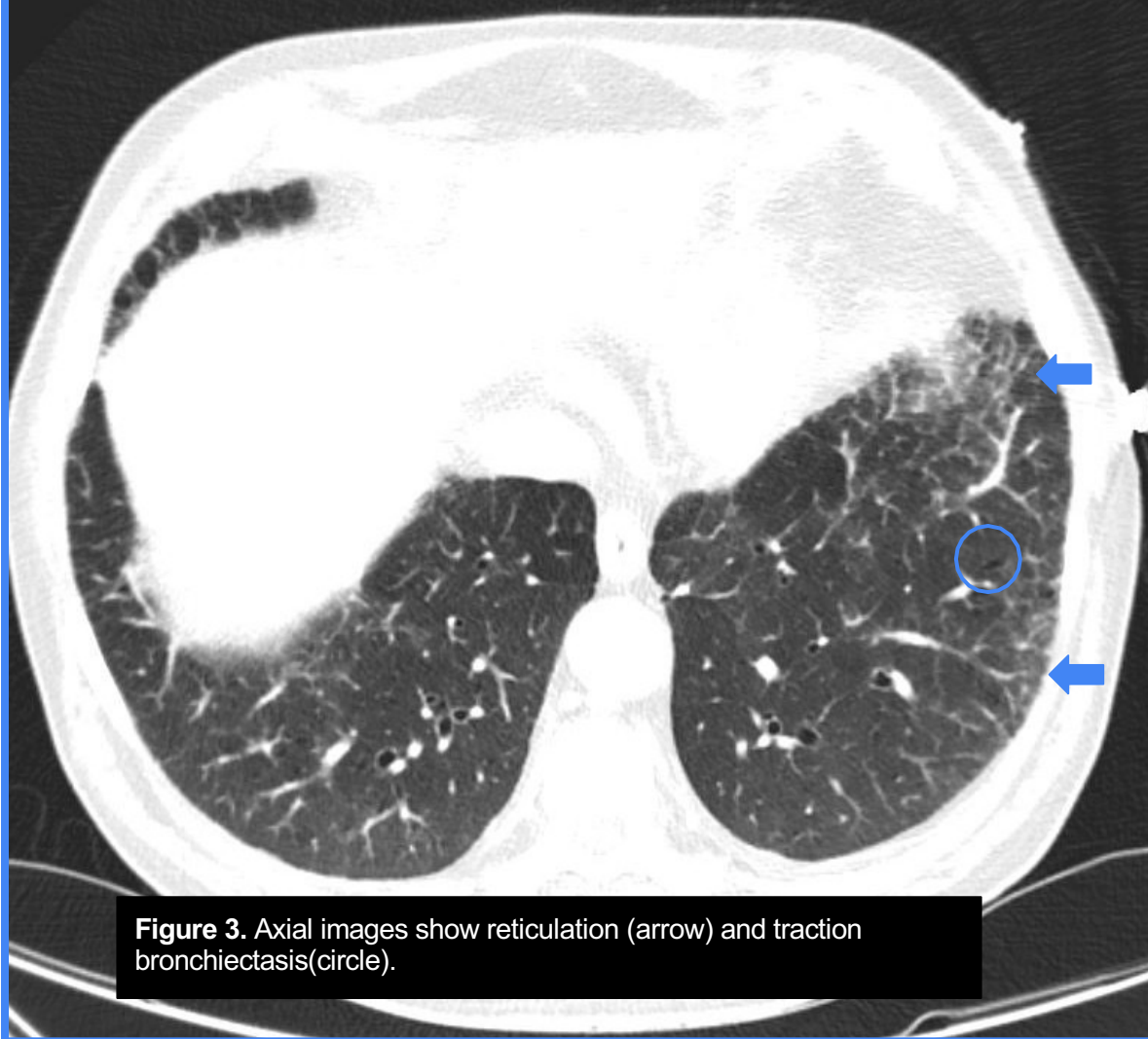


Figure 3. Axial images show reticulation (arrow) and traction bronchiectasis(circle).

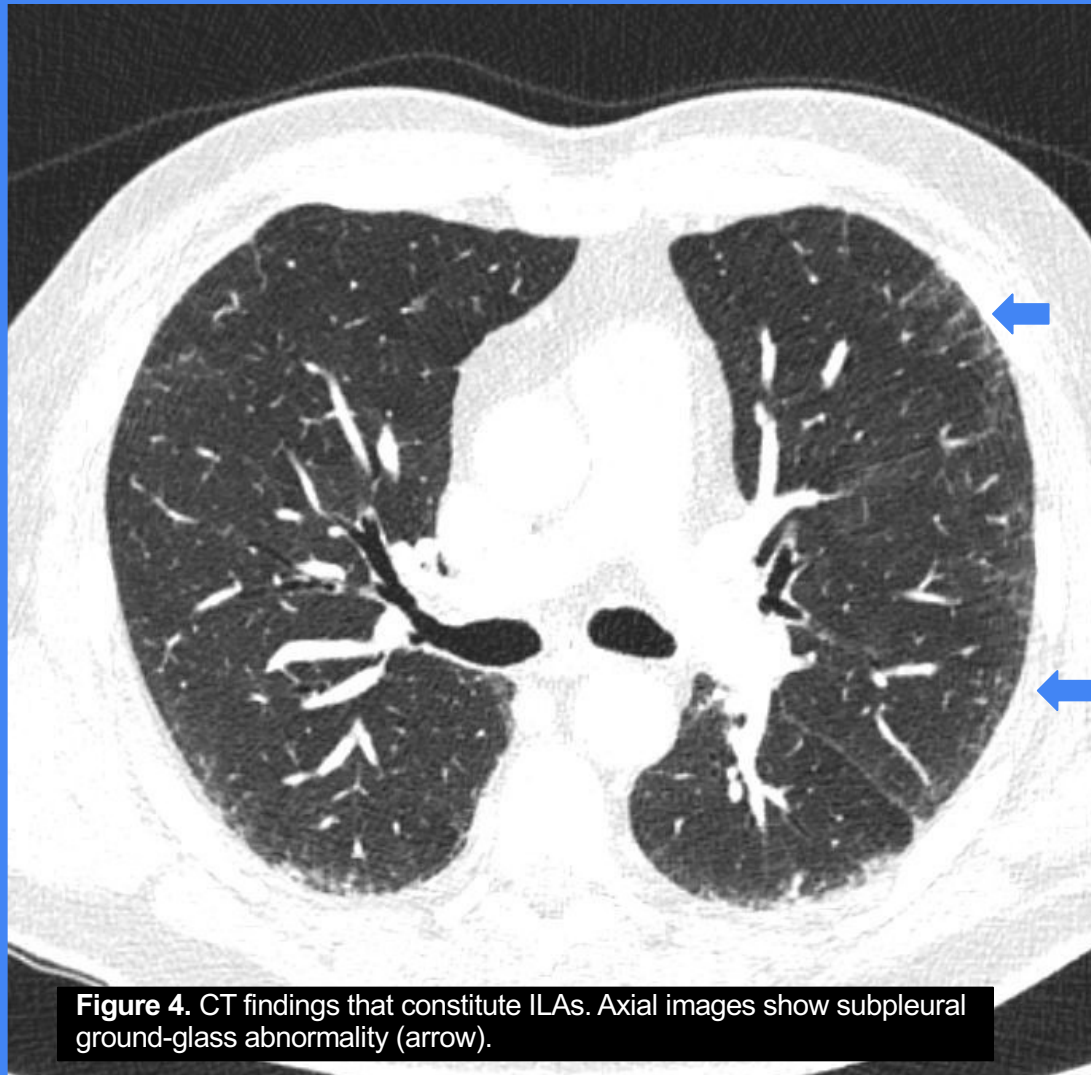


Figure 4. CT findings that constitute ILAs. Axial images show subpleural ground-glass abnormality (arrow).

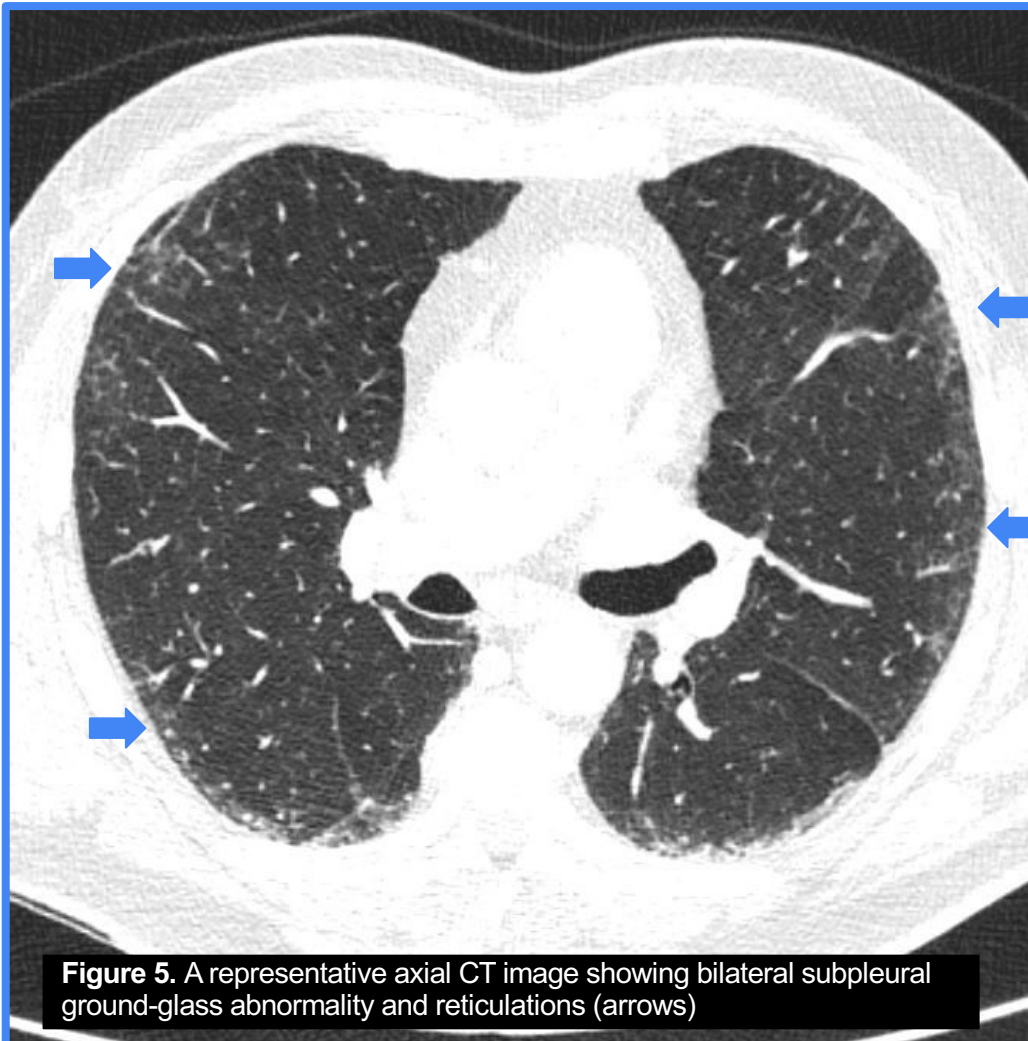


Figure 5. A representative axial CT image showing bilateral subpleural ground-glass abnormality and reticulations (arrows)