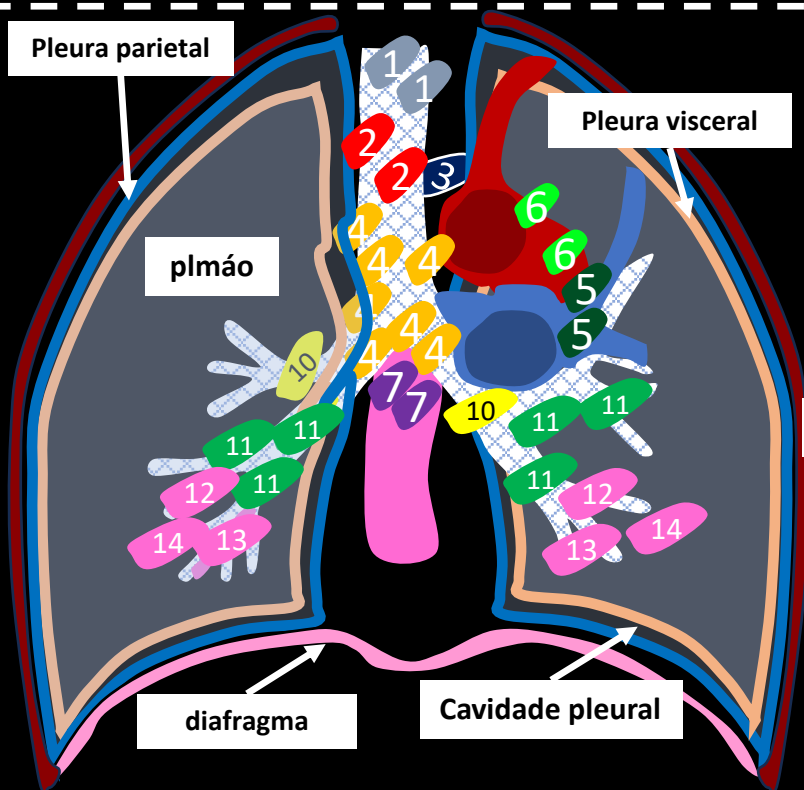


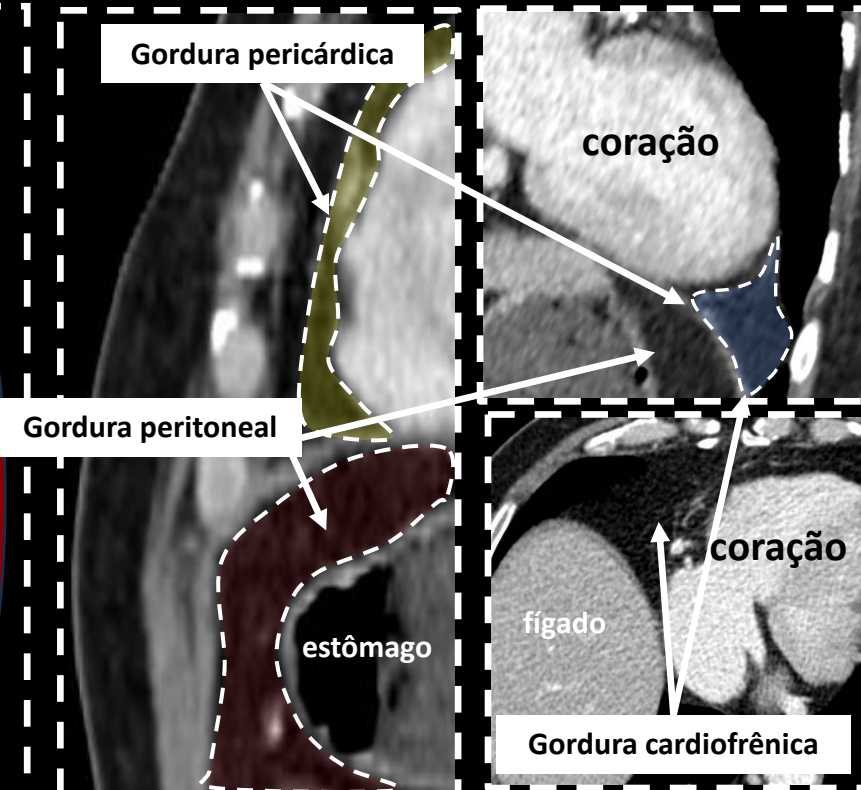
ANATOMIA TOMOGRÁFICA DO TÓRAX

LINFONODOS



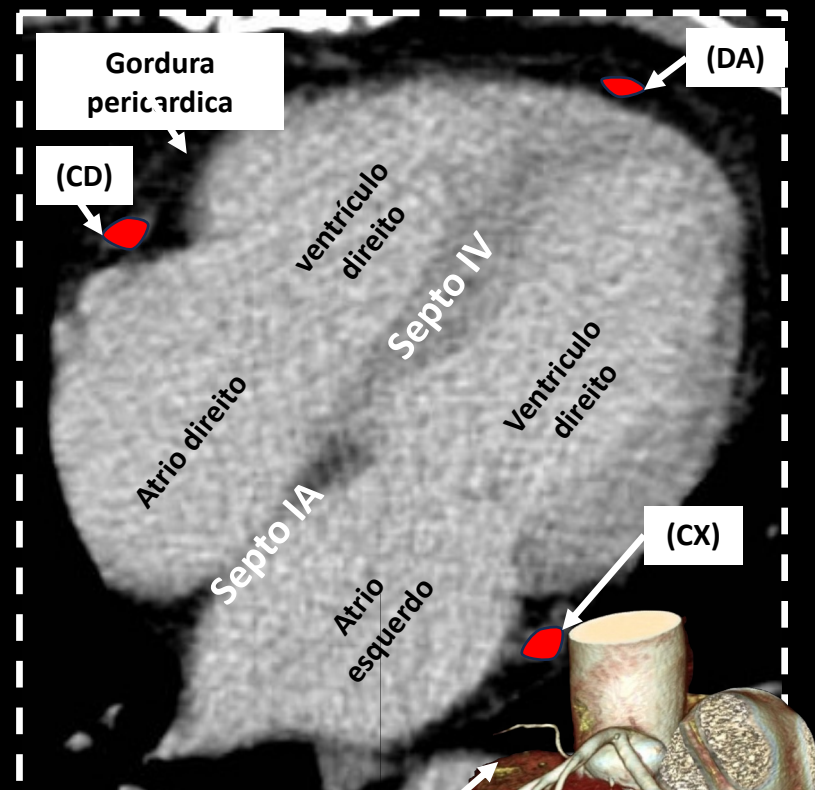
- | | |
|------------------------------------|-----------------------|
| 1. MEDIASTINAIS SUPERIORES | 6. PARA-AÓRTICOS |
| 2. PRE-VASCULARES E RETROTRAQUEAIS | 7. SUBCARINAIS |
| 3. PARATRAQUEAIS SUPERIORES | 8. PARA-ESOFÁGICOS |
| 4. PARATRAQUEAL INFERIORES | 9. LIGAMENTO PULMONAR |
| 5. SUB-AÓRTICOS | 10. HILAS |

GORDURA



- | |
|------------------|
| 11. INTERLOBAR |
| 12. LOBAR |
| 13. SEGMENTAR |
| 14. SUBSEGMENTAR |

CORAÇÃO



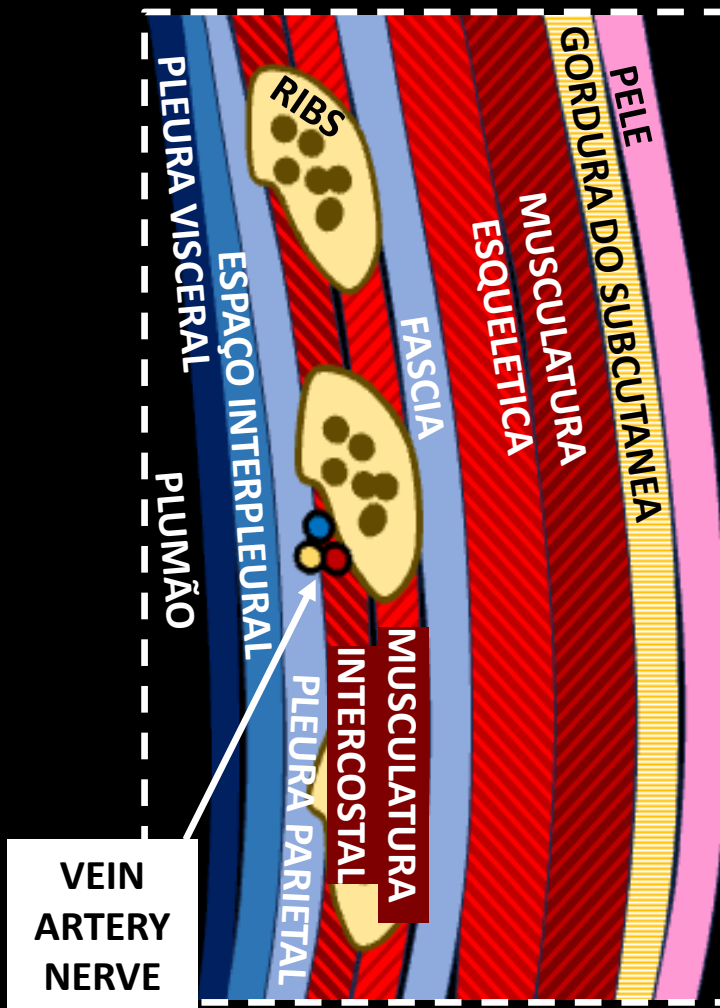
A. DESCENDENTE POSTERIOR (DP)

A. DESCENDENTE ANTERIOR (DA)

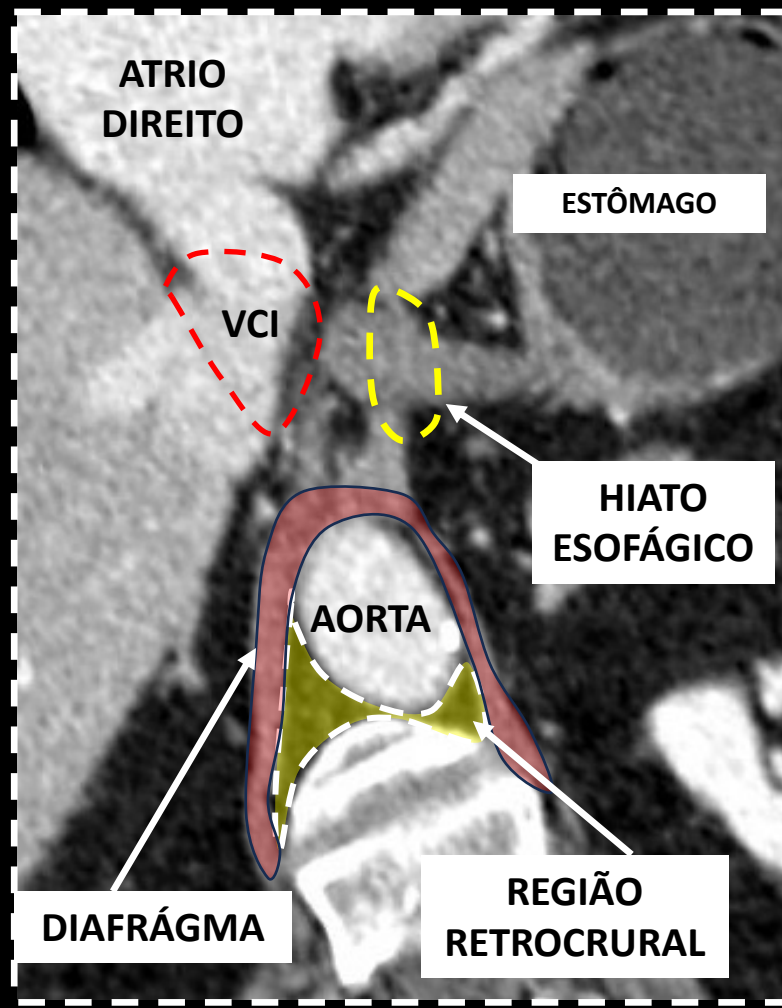
A. CIRCUNFLEXA (CX)

ANATOMIA TOMOGRÁFICA DO TÓRAX

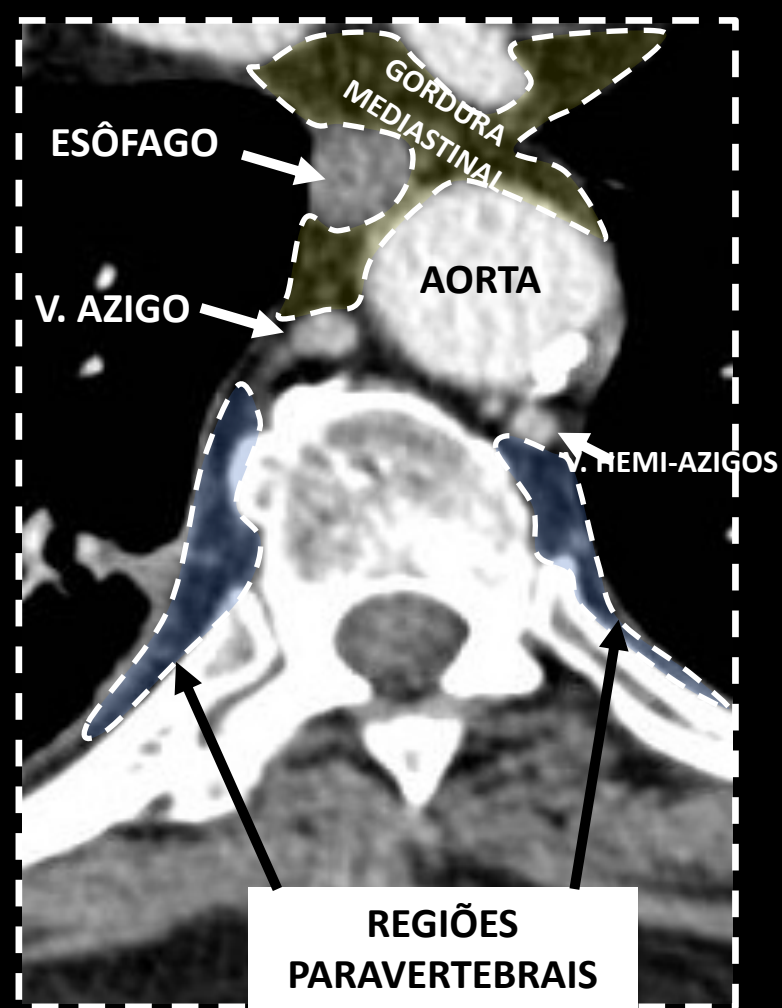
PAREDE



DIAFRAGMA

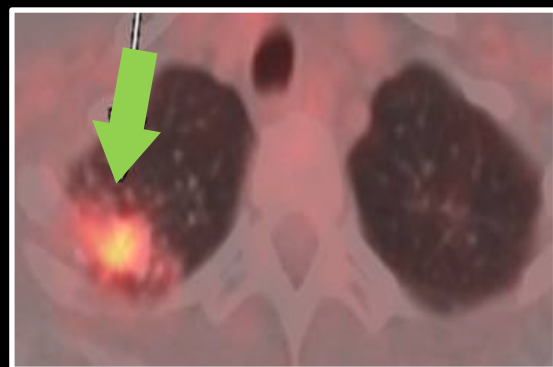
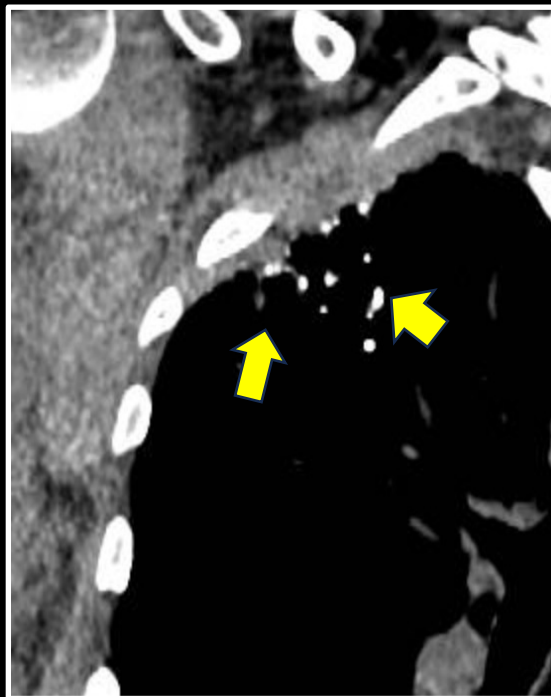


PARAVERTEBRAL



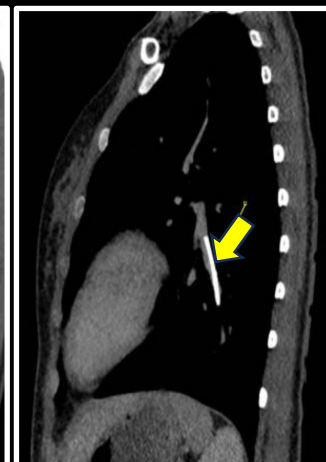
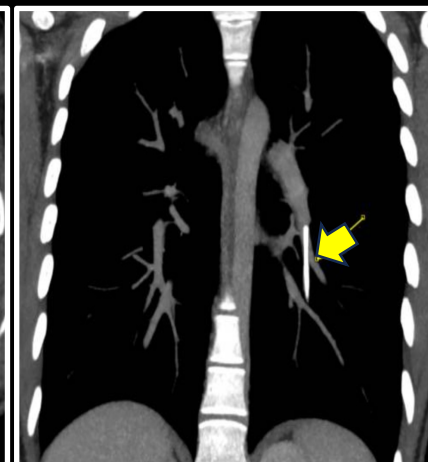
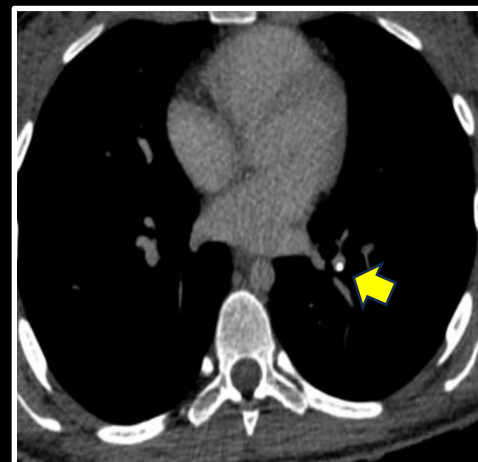
PARÊNQUIMA

TUMORES OCULTOS EM ALTERAÇÕES INTERSTICIAIS

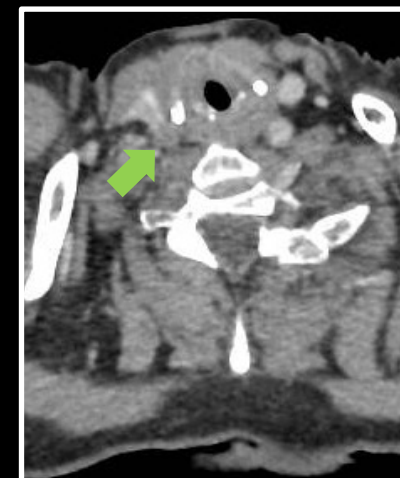
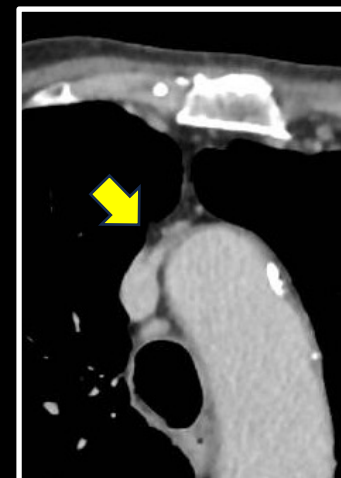
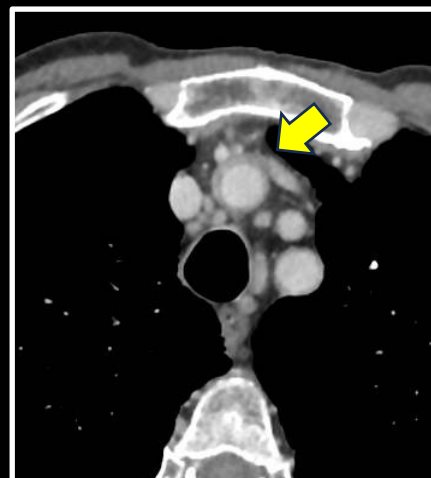


VASCULAR

EMBOLIA DE CORPO ESTRANHO

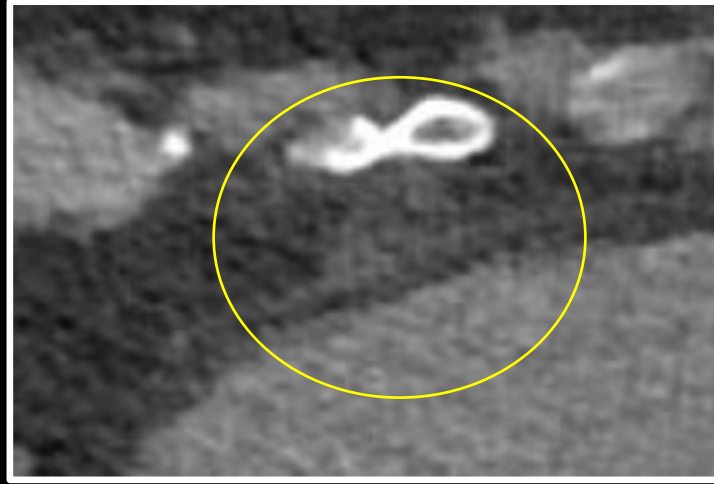
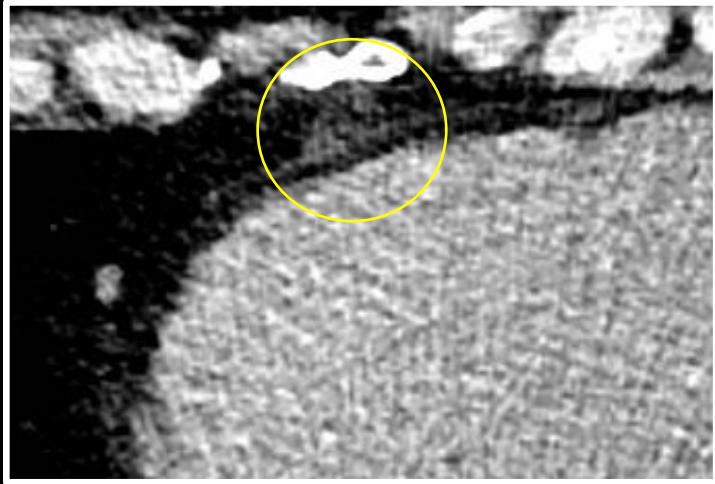


TROMBOSE DE VASOS MEDIASTINAIS

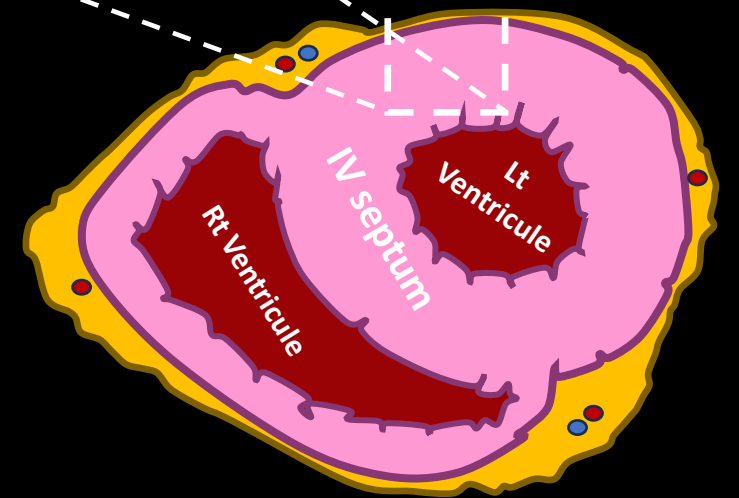
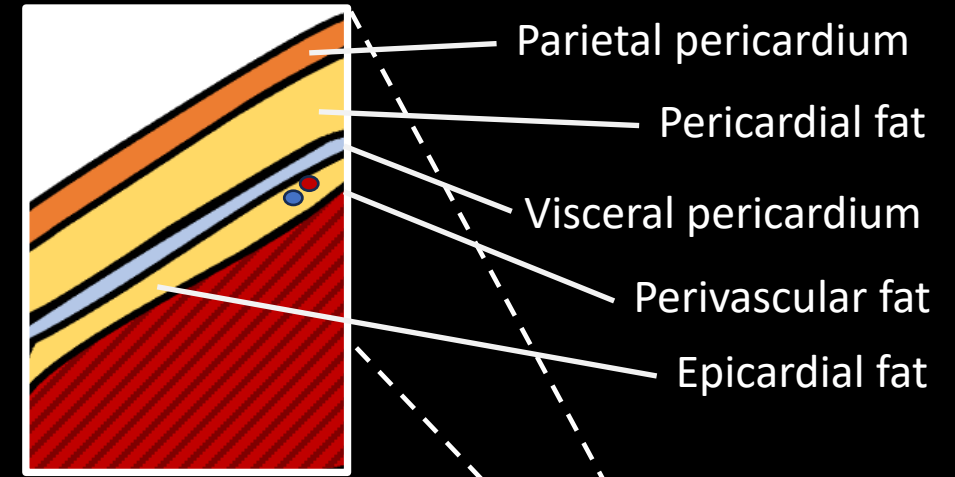
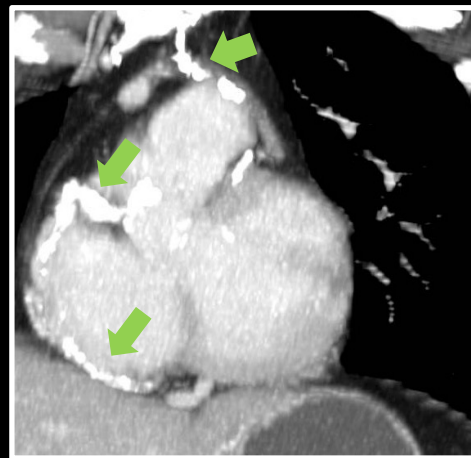
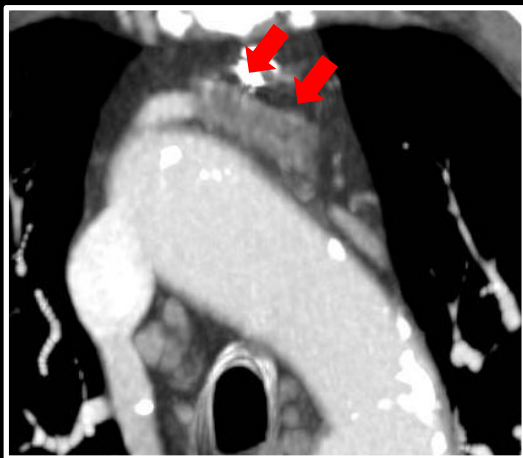
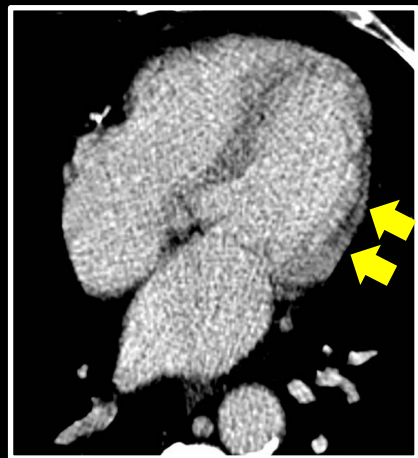


CORAÇÃO

NECROSE DA GORDURA EPIPERICÁRDICA

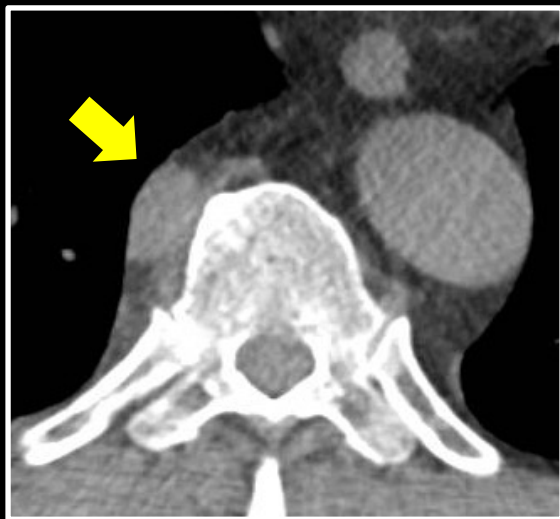
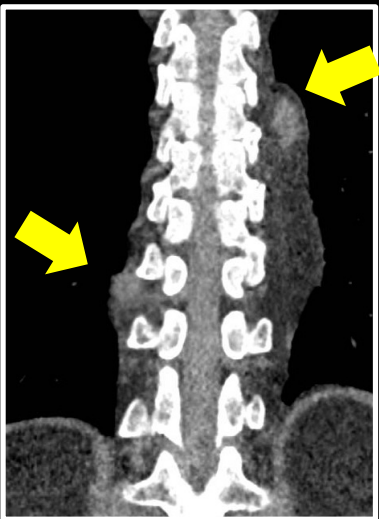


INFARTO CRÔNICO

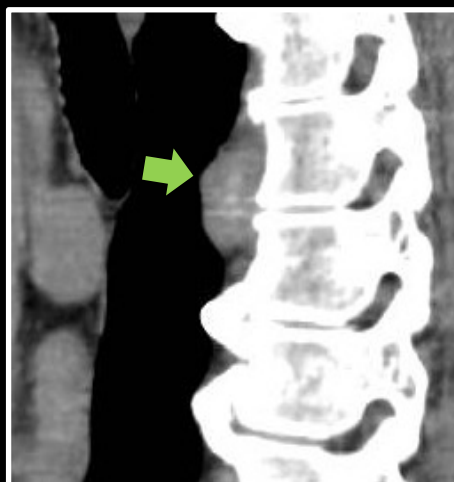


MEDIASTINO

LINFONODOMEGALIAS EM CADEIAS ATÍPICAS



METÁSTASES NAS REGIÕES PARAVERTEBRAIS



PLEURA

METÁSTASES NAS REGIÕES PARAVERTEBRAIS

