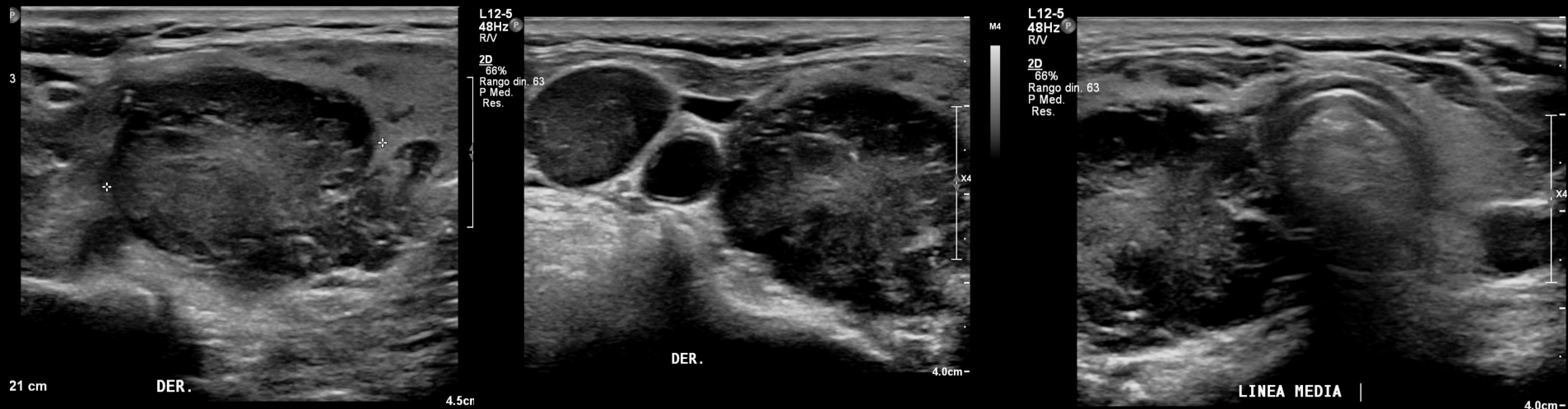
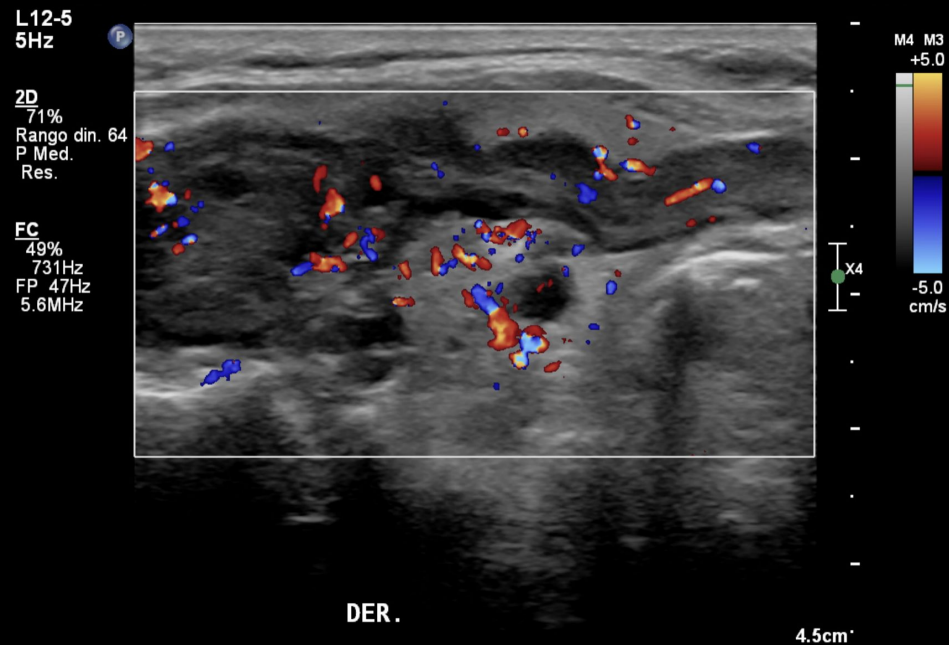
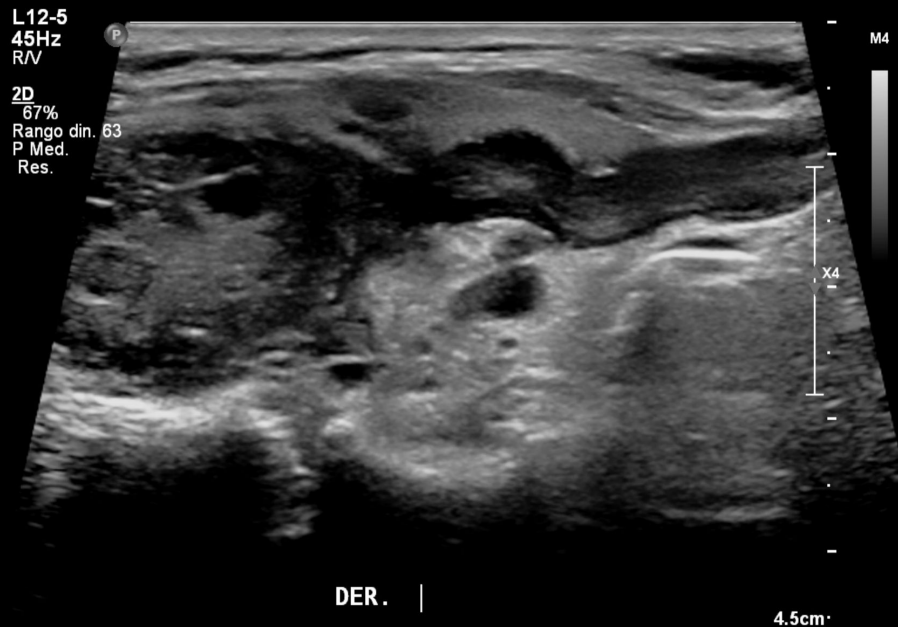


Case 1



The right lobe is almost completely replaced by a solid node, of irregular morphology, hypoecogenic, with some ecogenic areas in its thickness, which measures 38 x 22 x 32 mm. This nodule compromises the capsule in its right side appearance and also the esophageal tracheal juice.

Case 1



It is accompanied by thrombosis, probably tumoral, of the lower thyroid vein and some intra-thyroid branches, the thrombosis extends to the chest, without apparent involvement of the brachiocephalic trunk.

Metastatic adenopathies in group IV right 15 x 23 mm, in group III right 14 x 20 mm and in group VI right paratracheal several measuring between 5 and 12 mm. In group IV left, a pair of suspected adenopathies of 6 and 7 mm are observed.

Case 2

Tiroides

L12-5

29Hz

R/V

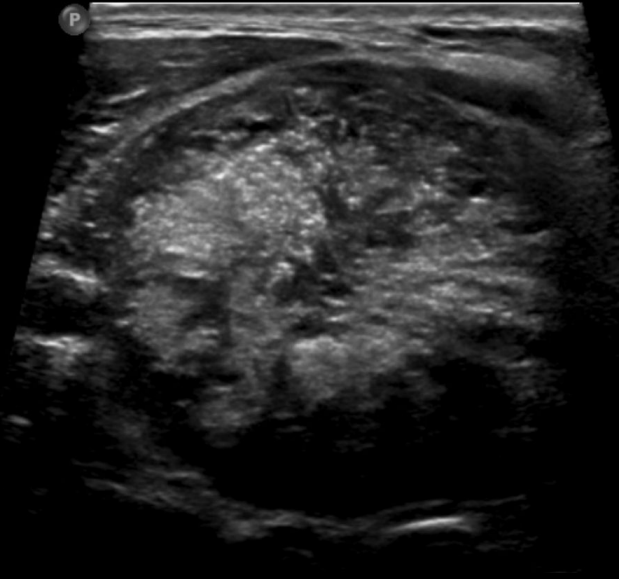
2D

76%

Rango din. 66

P Med.

Res.



Tiroides

L12-5

36Hz

R/V

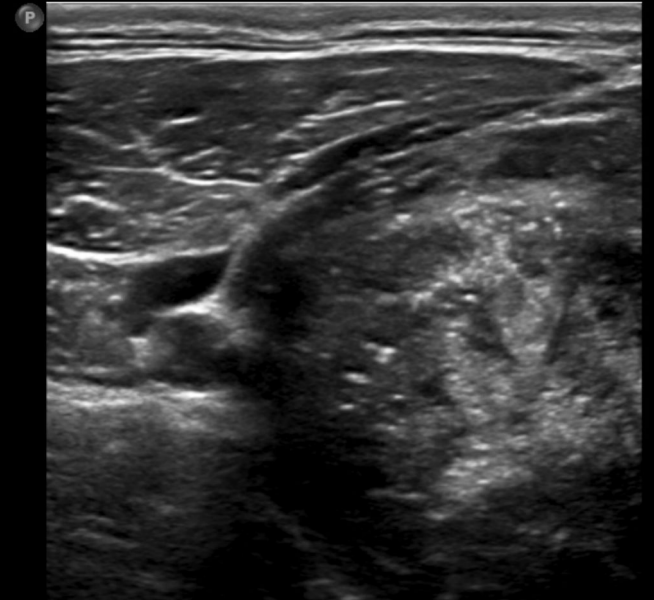
2D

73%

Rango din. 66

P Med.

Res.



It confirms the large neoplastic mass that almost completely replaced the thyroid, slightly more lateralized to the right. Persistent minimum thyroid residue in the left lobe. This mass is solid, heterogeneous, with calcifications in its thickness. By its size, only the front and lateral appearance can be assessed. To the upper it contacts strongly in the surrounding muscular plane, with some areas being invaded especially in the central and left portion. Move right and compress strongly the carotid vessels.

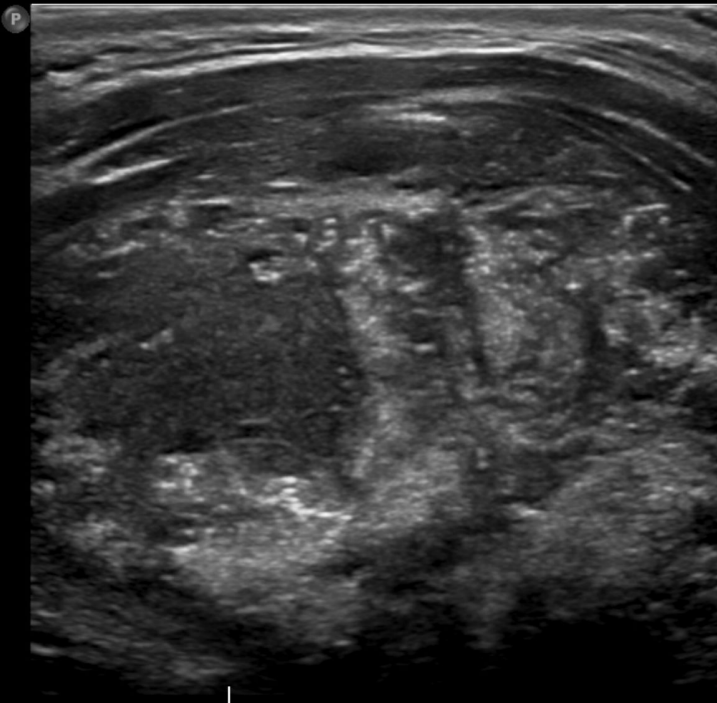
Case 2

Tiroides

L12-5
42Hz
R/V

2D

71%
Rango din. 66
P Med.
Res.



TIs0.0 MI

-



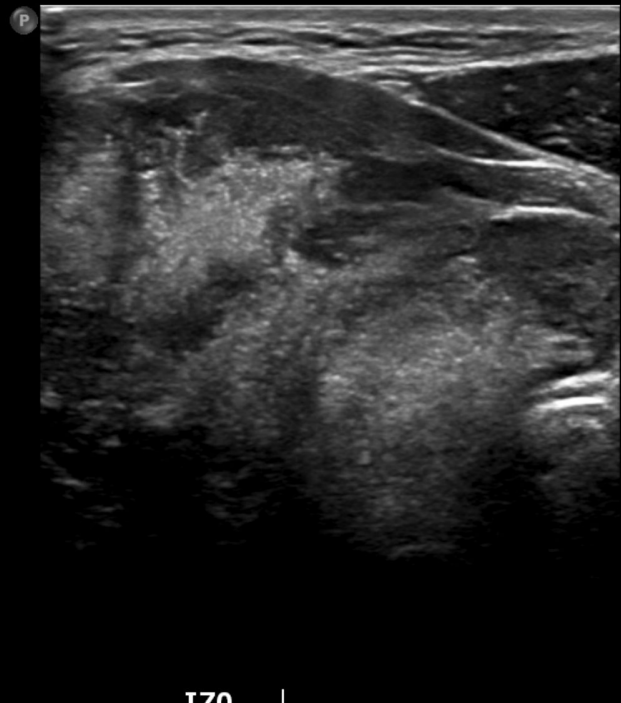
5.0cm

Tiroides

L12-5
36Hz
R/V

2D

73%
Rango din. 66
P Med.
Res.



I/ZQ.

Towards the left side, it compresses and displaces the esophagus and the trachea, without a clear plane of clivage with these structures, and with likely extension to the trachea.

Case 3



Completely replacing the middle and upper third of the right thyroid lobe, a large solid, heterogeneous, hypoecogenous mass with calcifications is observed, measuring approximately 38 x 28 x 44 mm. This thyroid mass encompasses the carotid vessels, without a clear plan of clivage. Compromises and trombosis the inner jugular vein. It extends to the perithyroid muscle planes, reaching and compromising the sternocleidomastoid.
