

Figure 1. Axial computed tomography (CT) and contrast enhanced CT (CECT) images at the same level show a polypoid enhancing mass (↖) protruding into the ileal lumen (↗)



Figure 2. Coronal CECT image shows an enhancing polypoid mass (↖) protruding into the ileal lumen (↗) with associated telescoping of the proximal ileal loop (*) giving an appearance of bowel within bowel, consistent with and ileo-ileal intussusception

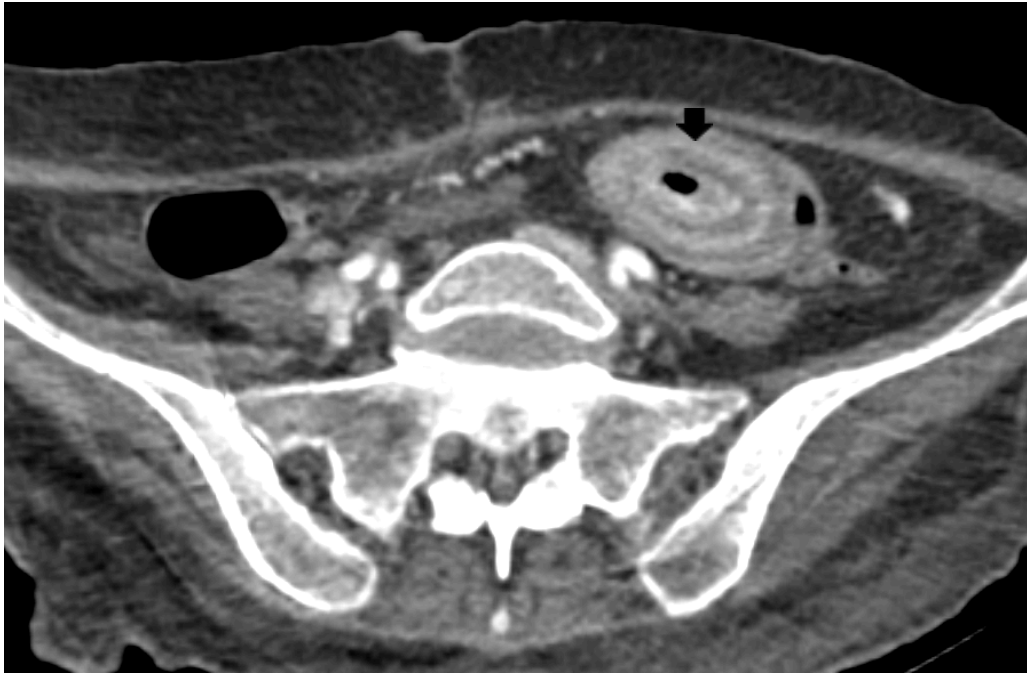


Figure 3. Axial CECT image shows target sign consistent with intestinal intussusception (arrow).



Figure 4. Coronal CECT image reveals an enhancing solid lesion infiltrating the left psoas muscle (☆). Absence of left kidney is also noted (↷).