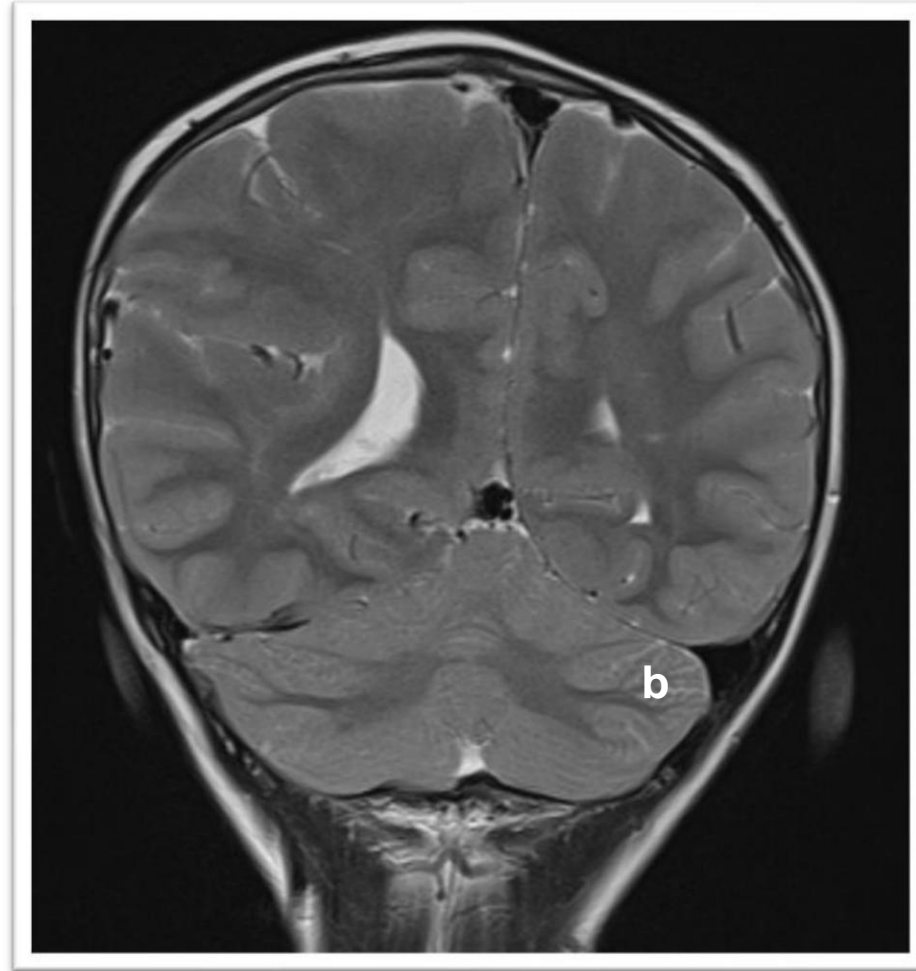


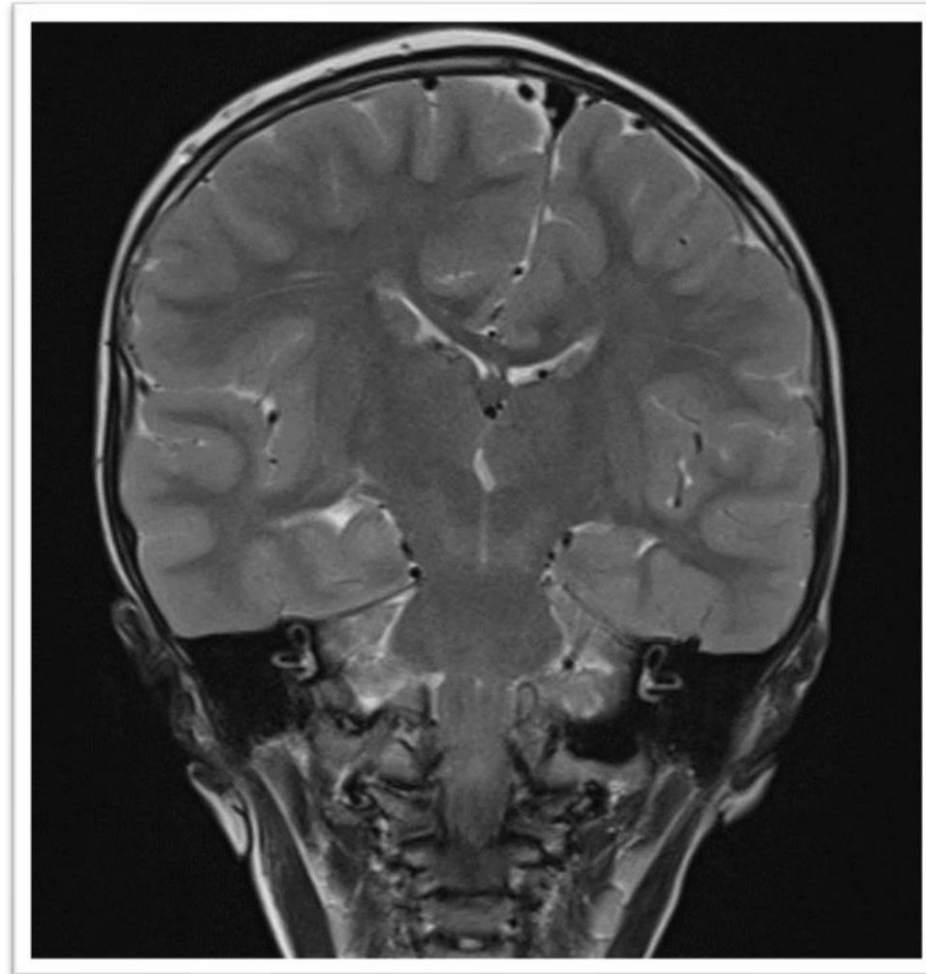
• **Figura 1.**

Corte axial T2 evidenciando hemihipertrofia
cérebro direito, assimetria ventricular e
giros largos e rasos



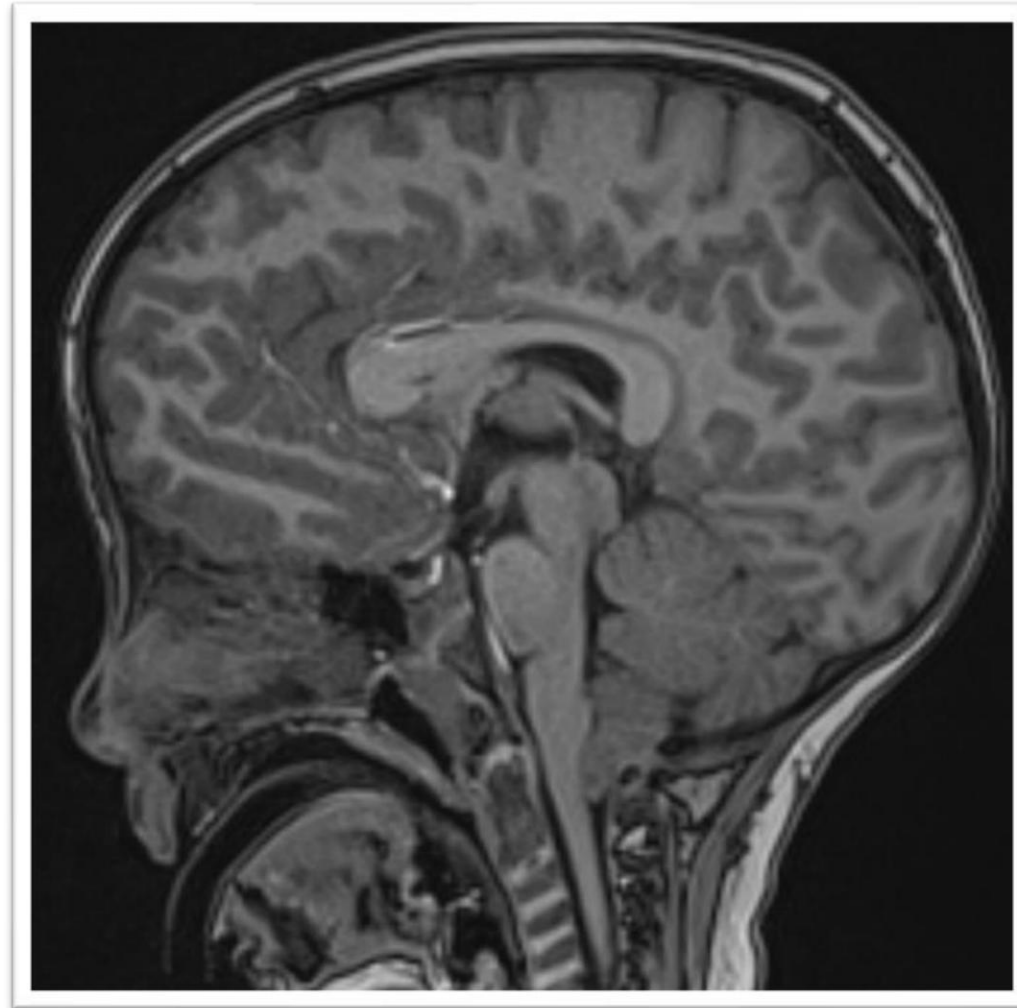
• **Figura 2.**

Coronal T2 mostrando hemihipertrofia cerebelar direito.



• **Figura 3.**

Coronal T2 mostrando hemihipertrofia do tálamo e tronco encefálico.



- **Figura 4**

Sagittal T1 mostrando descida das tonsilas cerebelares e tronco cerebral.