

Escleroterapia de cisto tireoglossso utilizando polidocanol

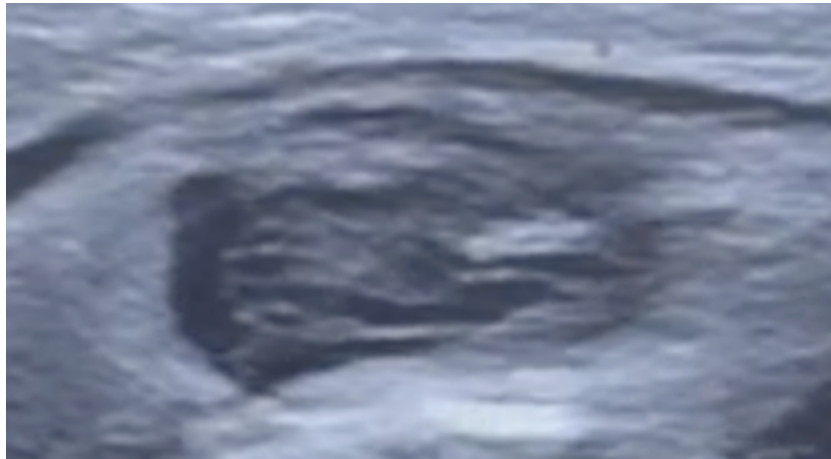
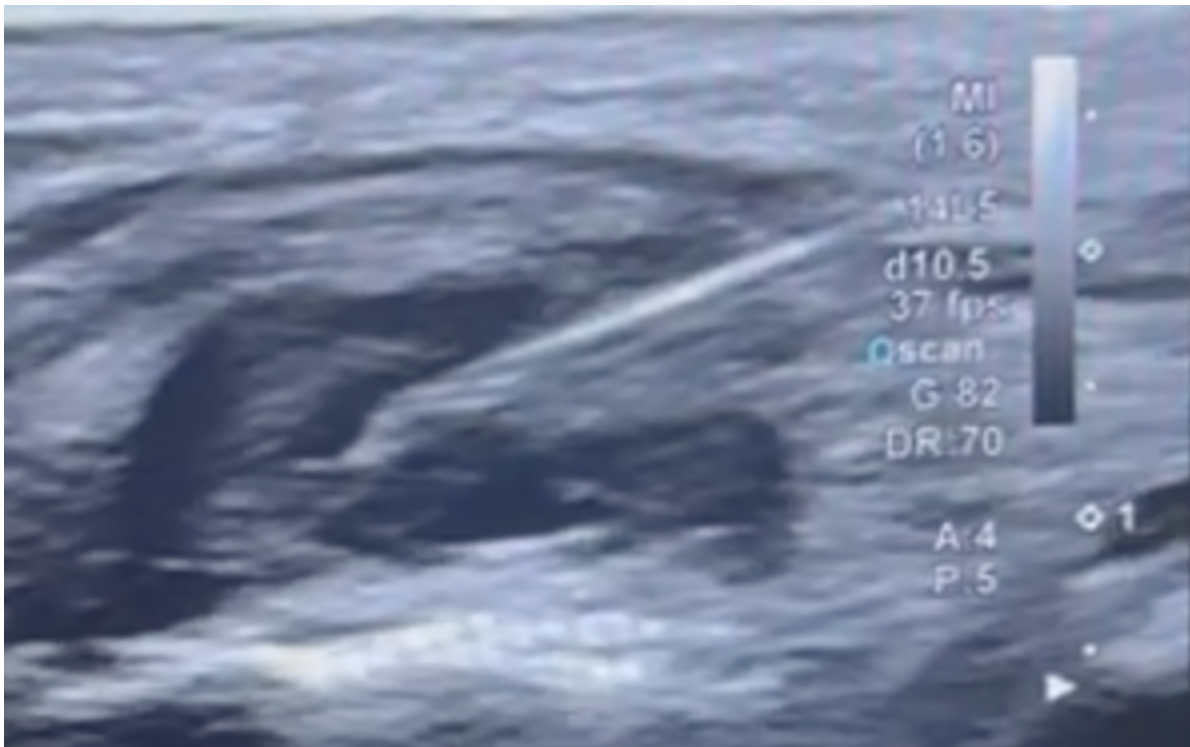
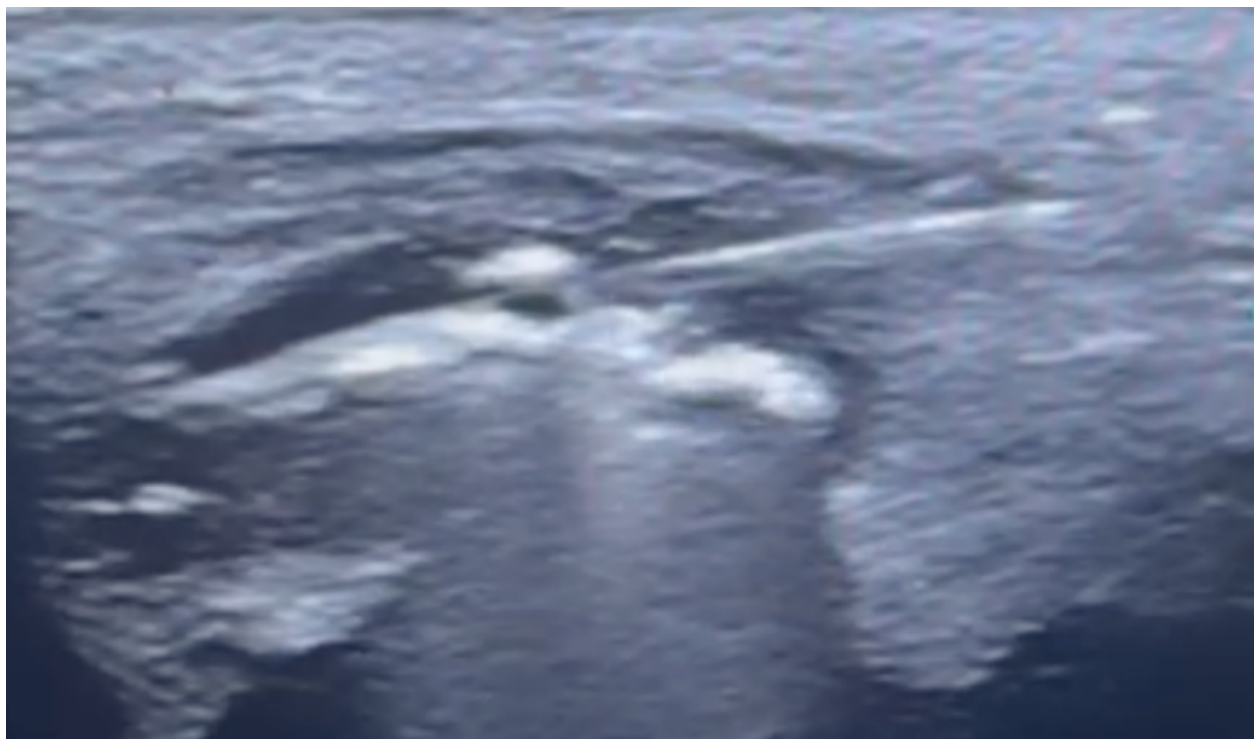


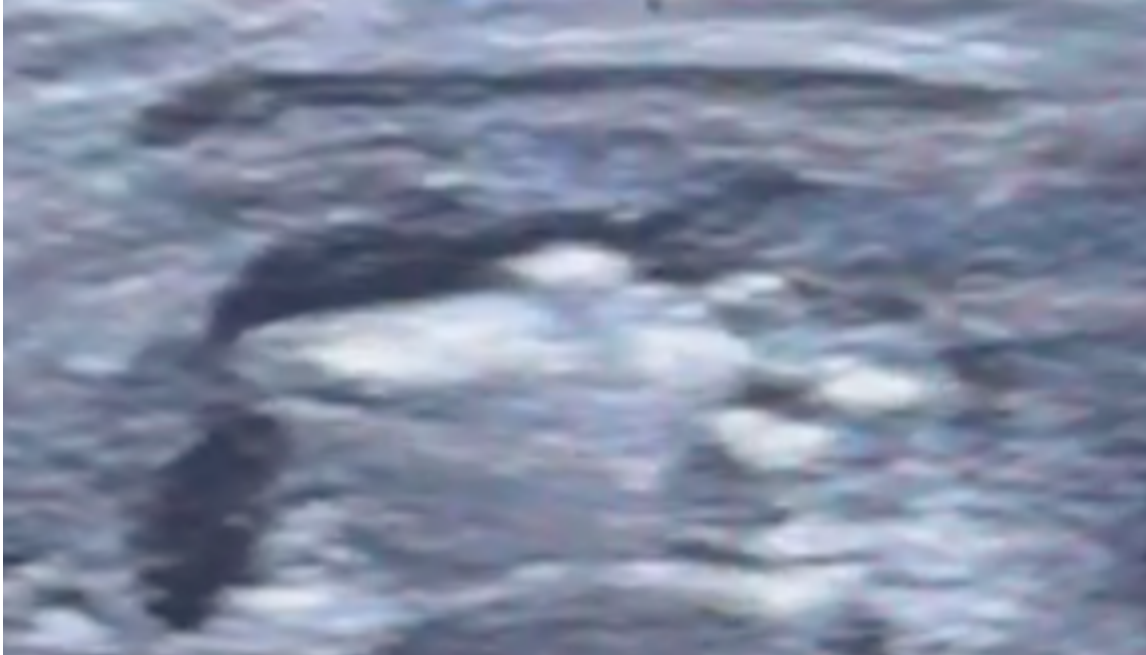
Imagem ultrassonográfica demonstrando cisto do ducto tireoglossso.



Ultrassom denotando agulha 18 gauge inserida no cisto para destilar o polidocanol



Instalação de polidocanol para escleroterapia



Cisto completamente preenchido por polidocanol



Imagem polidocanol usado para procedimento