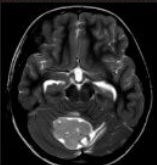


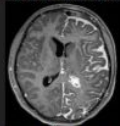
SUBEPENDIMOMA



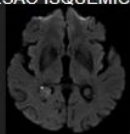
MEDULOBLASTOMA



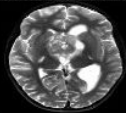
STURGE WEBER



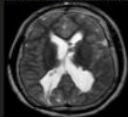
LESÃO ISQUÊMICA



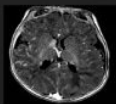
TUMOR DE CÉLULAS GERMINATIVAS



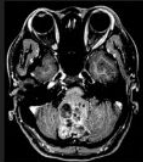
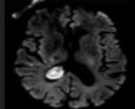
ASTROCITOMA DE CÉLULAS GIGANTES



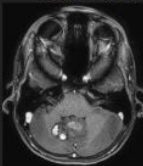
HAMARTOMA



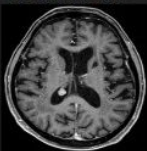
XANTOGRANULOMA



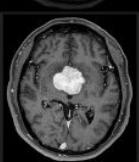
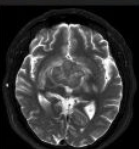
EPENDIMOMA



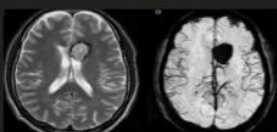
METÁSTASE



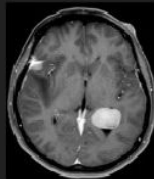
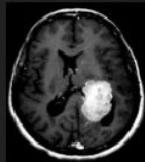
GLIOMA CORDOIDE



LESÃO CAVERNOSA



MENINGIOMAS



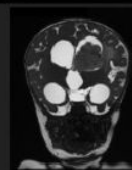
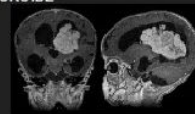
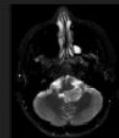
NEUROCITOMA CENTRAL



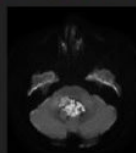
CISTO DE BLAKE



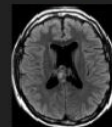
PAPILOMAS DO PLEXO COROIDE



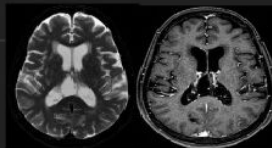
CISTO EPIDERMÓIDE



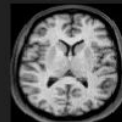
ASTROCITOMA PILOCÍTICO



CISTO ARACNOIDE



CISTOS COLOIDES



GLIOSARCOMA

