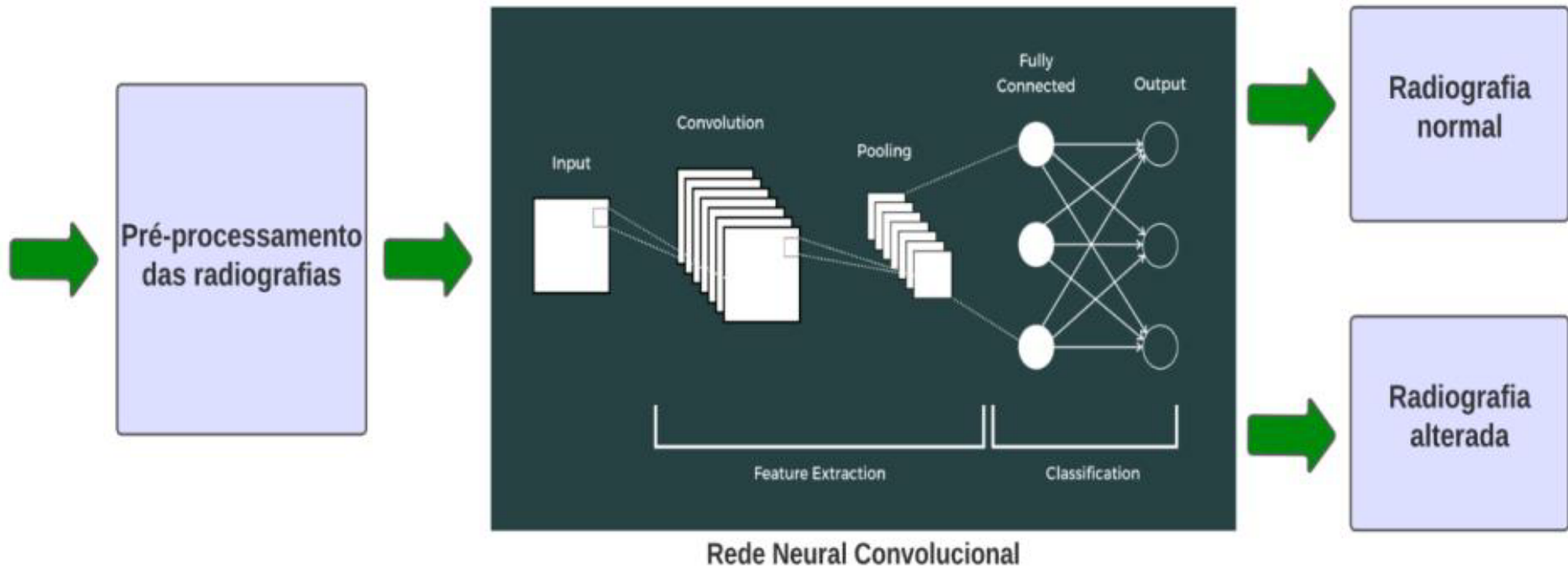
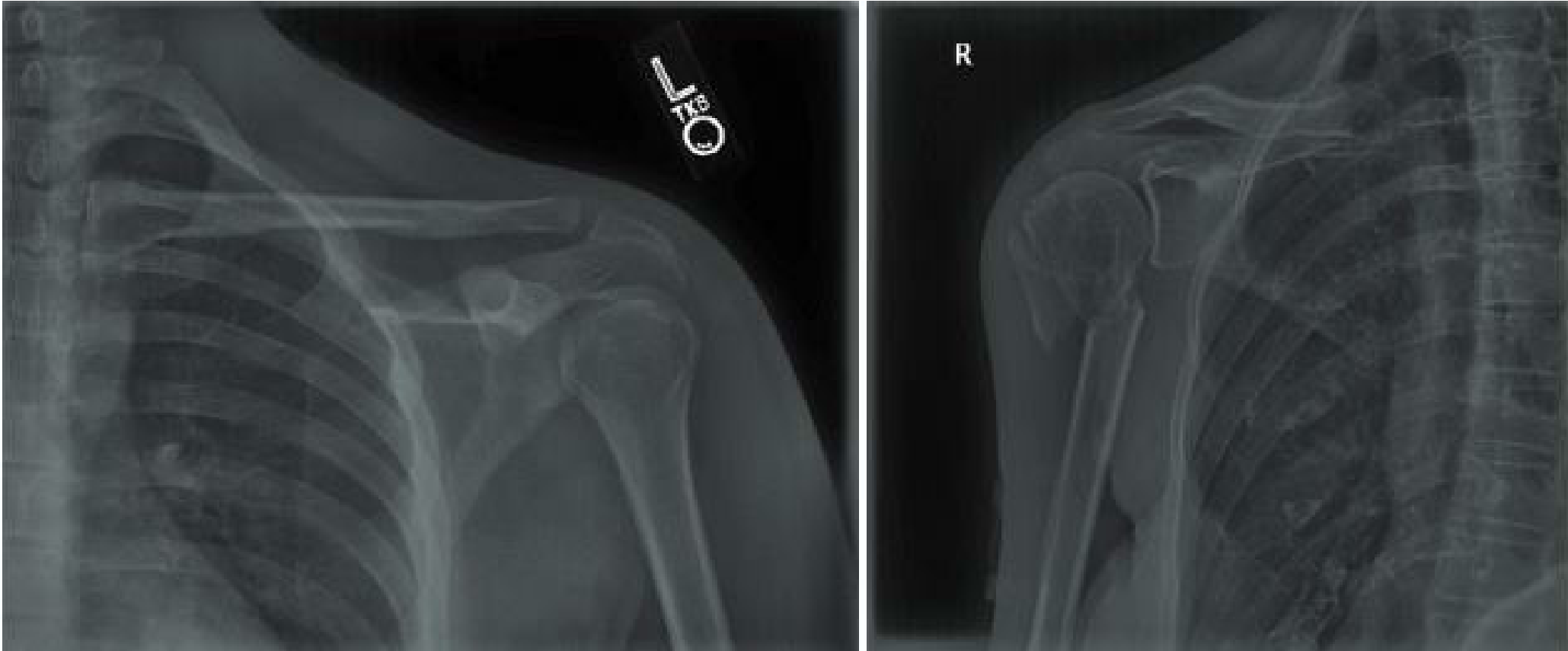




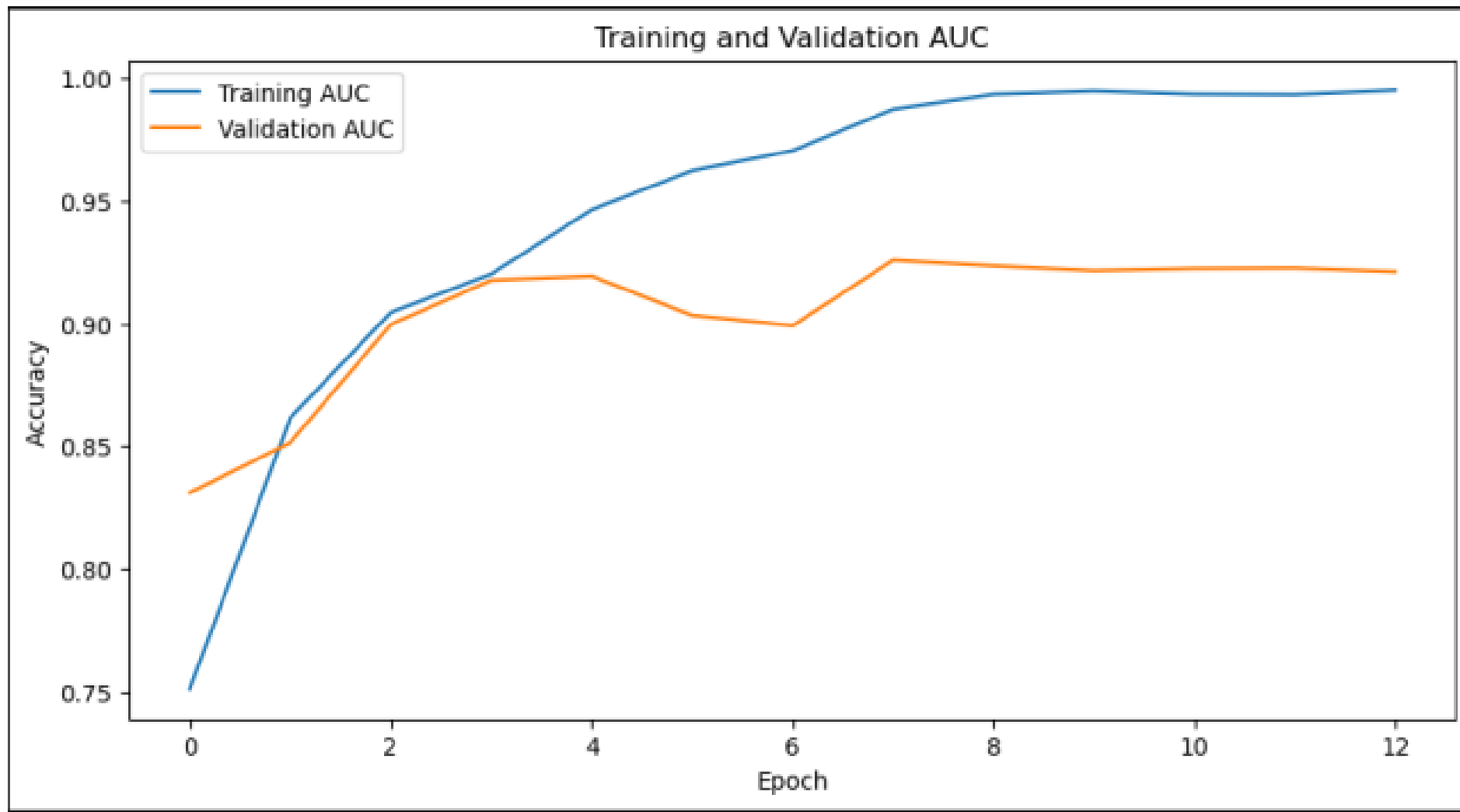
Input: Radiografia de ombro



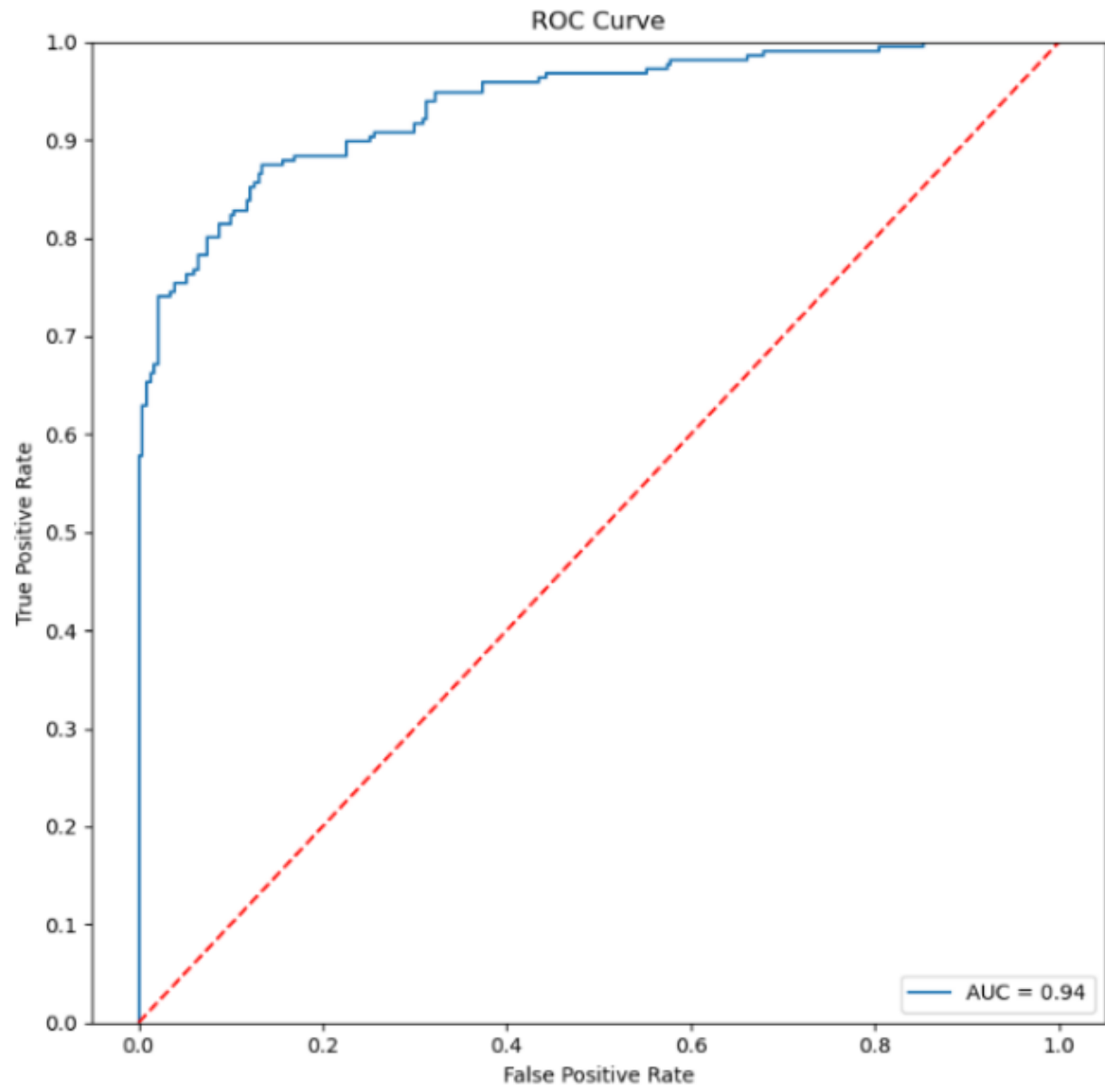
Fluxo de trabalho para realizar a triagem de radiografias de ombro utilizando deep learning



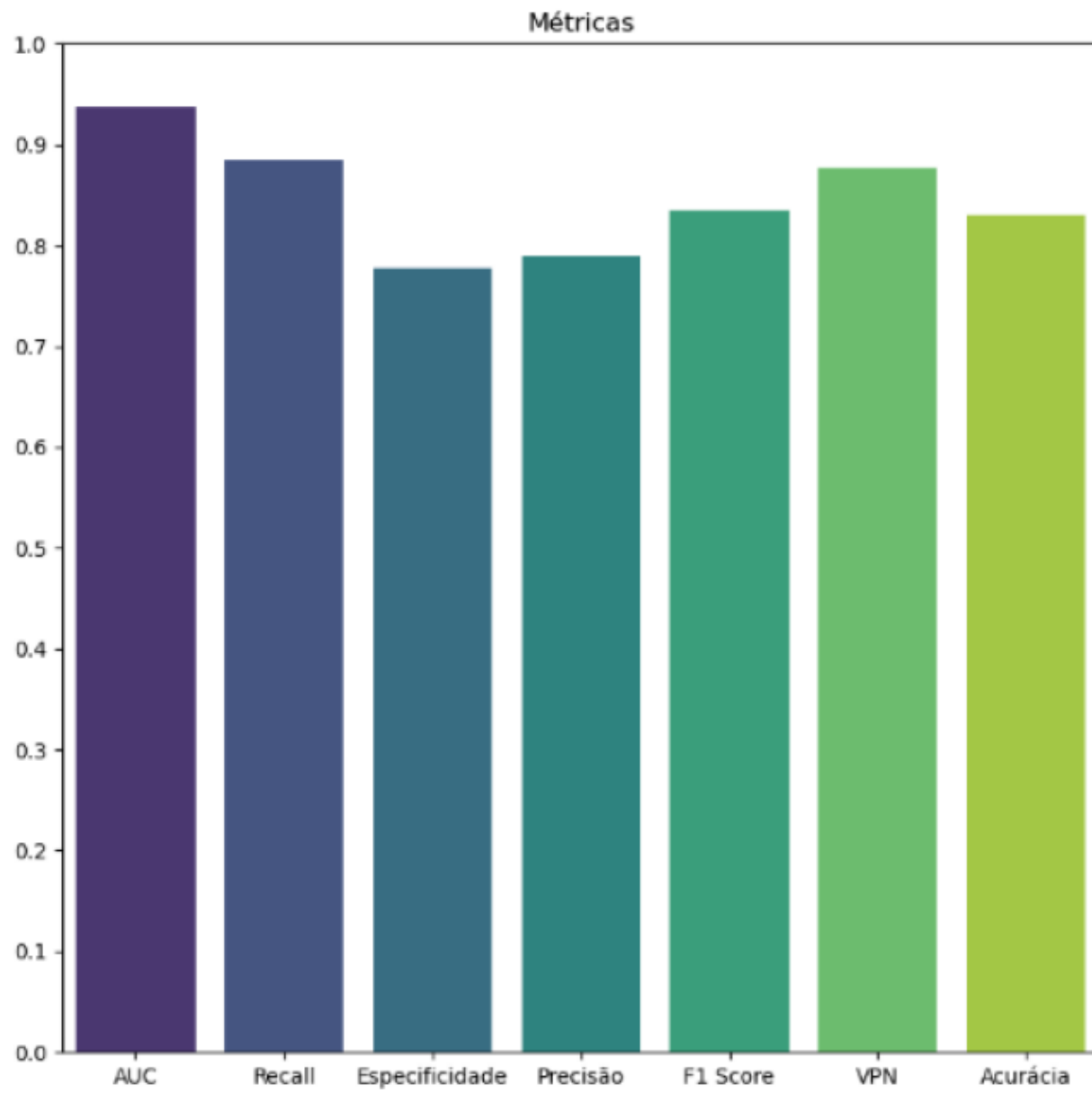
Exemplos de radiografias normal (direita) e alterada (esquerda) retiradas do dataset, após pré-processamento de imagens



AUC nos grupos treinamento e validação



Curva ROC / AUC no grupo teste



Demais métricas no grupo teste