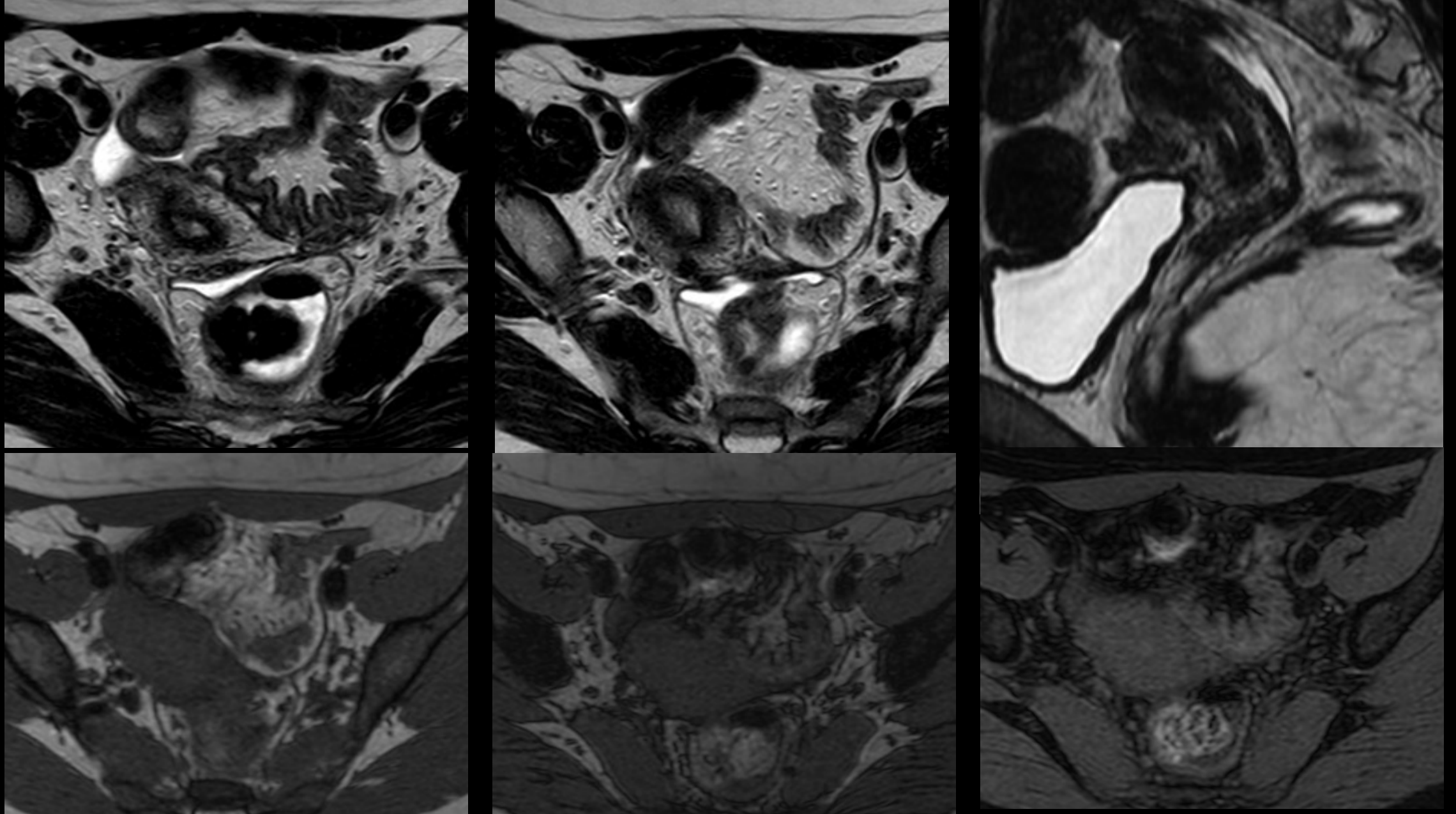
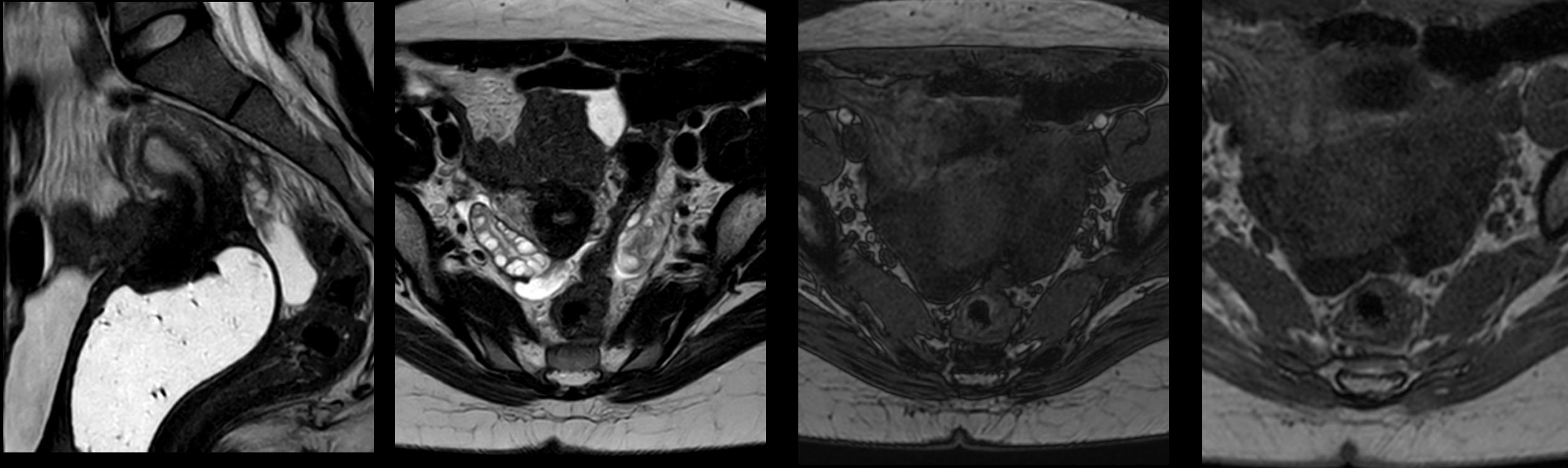


Figure 1. Right Ovaric Endometrioma: exhibiting high signal intensity on T1 and low signal intensity on T2



**Figure 2. Superficial peritoneal endometriosis.** Thickening in the form of a plate of retrocervical tissue, up to 0.4 cm thick, predominantly on the right side. Thickening of bilateral uterosacral ligaments is noted, along with thickening of the pelvic peritoneum associated with a mild amount of free fluid. A hypointense fibrotic plate measuring approximately 1 cm is observed on T2 between the uterine fundus and the distal segment of the sigmoid.



**Figure 4.** Deep endometriosis, fibrotic type. In the uterine torus, a band of hypointense tissue is identified on T2, approximately 6 mm thick, along with thickening of the uterosacral ligaments.

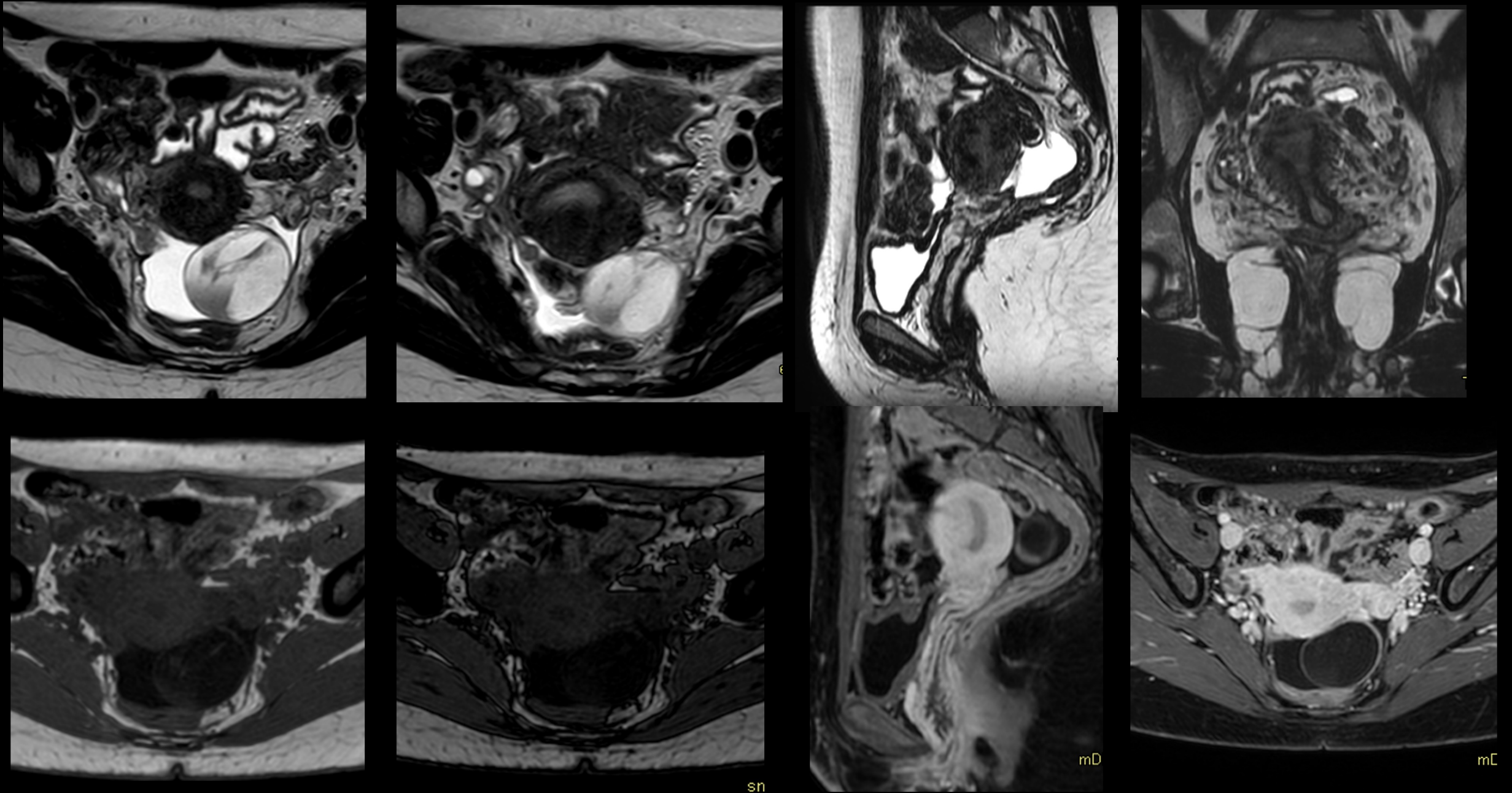


Figure 4. Adenomyosis. Uterus in midposition, with normal morphology and size. Thickening of the junctional zone in the body region, reaching a thickness of 14 mm. Endometrium of normal thickness.